

FLORIDA AGRICULTURAL STATISTICS

Citrus Summary 1991-92

FLORIDA DEPARTMENT OF AGRICULTURE
AND CONSUMER SERVICES

BOB CRAWFORD, COMMISSIONER

FLORIDA AGRICULTURAL
STATISTICS SERVICE

Robert L. Freie, State Statistician

DIVISION OF MARKETING
AND DEVELOPMENT

Dr. H. Vance Young, Jr., Director

Cooperating with

U.S. Department of Agriculture
Agricultural Marketing Service
and
National Agricultural Statistics Service

ACKNOWLEDGMENT

The acreage, production, utilization, monthly and season average price, and crop value statistics for Florida as shown in this summary are official estimates of the Florida Agricultural Statistics Service. Corresponding data for other citrus states are from official reports of the USDA, National Agricultural Statistics Service. Canned and frozen pack statistics were compiled by the Florida Citrus Processors Association. Where data are from other sources, appropriate references appear.

Records of the Division of Fruit and Vegetable Inspection, Florida Department of Agriculture and Consumer Services, were used in preparing production and utilization estimates. The Citrus Administrative Committee assisted in assembling these data.

Many producers, shippers, processors, sales agencies, transportation firms, and others associated with the citrus industry voluntarily supplied basic data used to develop these statistics. Their contributions are sincerely appreciated.

This report was assembled under the direction of Robert R. Terry, Candice T. Erick, and Elise E. Leiphart of the Florida Agricultural Statistics Service.

For information call: (407) 648-6015.

Published January 1993

CONTENTS

	Page		Page
Narrative on 1991-92 season		Colored seedless grapefruit	22
Weather highlights	1	Limes	23
Production summary	2	Tangelos	24
Value and prices	3	K-Early Citrus Fruit	24
Citrus production, 1886 to date and		Temples	24
history of Florida citrus industry	4	Early tangerines	25
Citrus acreage and production, by states		Dancy tangerines	25
Principal citrus fruits	5	Honey tangerines	25
Oranges	6	Florida production, by counties and	
Grapefruit	7	fruit types	26
Florida acreage, yield, production,		Florida citrus, commercial acreage, by	
utilization, season average on-tree		counties and fruit types	27
price, and value of sales		Florida citrus, commercial trees, by	
All oranges	8	counties and fruit types	28
Early and midseason oranges	8	Other states' citrus acreage	29
Late (Valencia) oranges	9	Citrus received by major cities	
Temples	9	Oranges and tangerines	30
All grapefruit	10	Grapefruit, tangelos, and Temples	31
Seedy grapefruit	10	Citrus fresh shipments by states and	
White seedless grapefruit	11	imports to U.S.	
Colored seedless grapefruit	11	Oranges	32
Tangelos	12	Grapefruit	33
All tangerines	12	Tangerines, tangelos, Temples	
Limes	13	and K-Earlyls	34
Florida seedless grapefruit bearing		Citrus fresh exports by states	
acreage, by types	13	Oranges, tangelos, and Temples	35
Citrus production, utilization,		Grapefruit and tangerines	36
season average on-tree prices, and		Exports of fresh U.S. citrus, by	
value of sales		destinations and months	37
Oranges, by states	14	Exports of fresh Florida citrus,	
Oranges, by types and states, and		by weeks and types	38
Florida Temples	15	Exports of fresh Florida citrus,	
Grapefruit, by states	16	by seasons and types	39
Tangerines, by states	17	Exports of fresh Florida citrus,	
Other citrus, limes, and lemons,		by destinations and types	39
by states	18	Processed fruit utilization, by weeks	
Florida lemons, by types	18	Oranges, grapefruit, and Temples	40
Florida grapefruit, by marketing		Tangelos, tangerines, Honey	
districts		tangerines, and K-Earlyls	41
Production	19	Distribution of fruit utilization,	
Season average on-tree prices	19	by types and months	42
Florida citrus products, annual pack	20	National per capita consumption	
Florida monthly and season average		of citrus	43
on-tree prices		Florida FCOJ yields, by types	43
Early and midseason oranges	21	Production of citrus fruit, by	
Late (Valencia) oranges	21	counties and crop years	44
White seedless grapefruit	22	Data sources	45

**FLORIDA WEATHER HIGHLIGHTS, SELECTED AREAS AND MONTHS,
1991-92 CROP YEAR**

The 1991-92 season weather was favorable for citrus with the possible exception of warmer than normal temperatures in the lower interior areas of the State during the winter months. Bloom was early and light in many areas and the resulting fruit set was below expectations.

Rainfall and average temperatures were generally above normal throughout the spring. By mid summer some east coast stations were reporting cumulative rainfall up to 25 inches above normal.

Rainfall was below normal in August and September but heavier in October. Temperatures were near normal. Harvest began unusually early for the second consecutive season because of the early bloom.

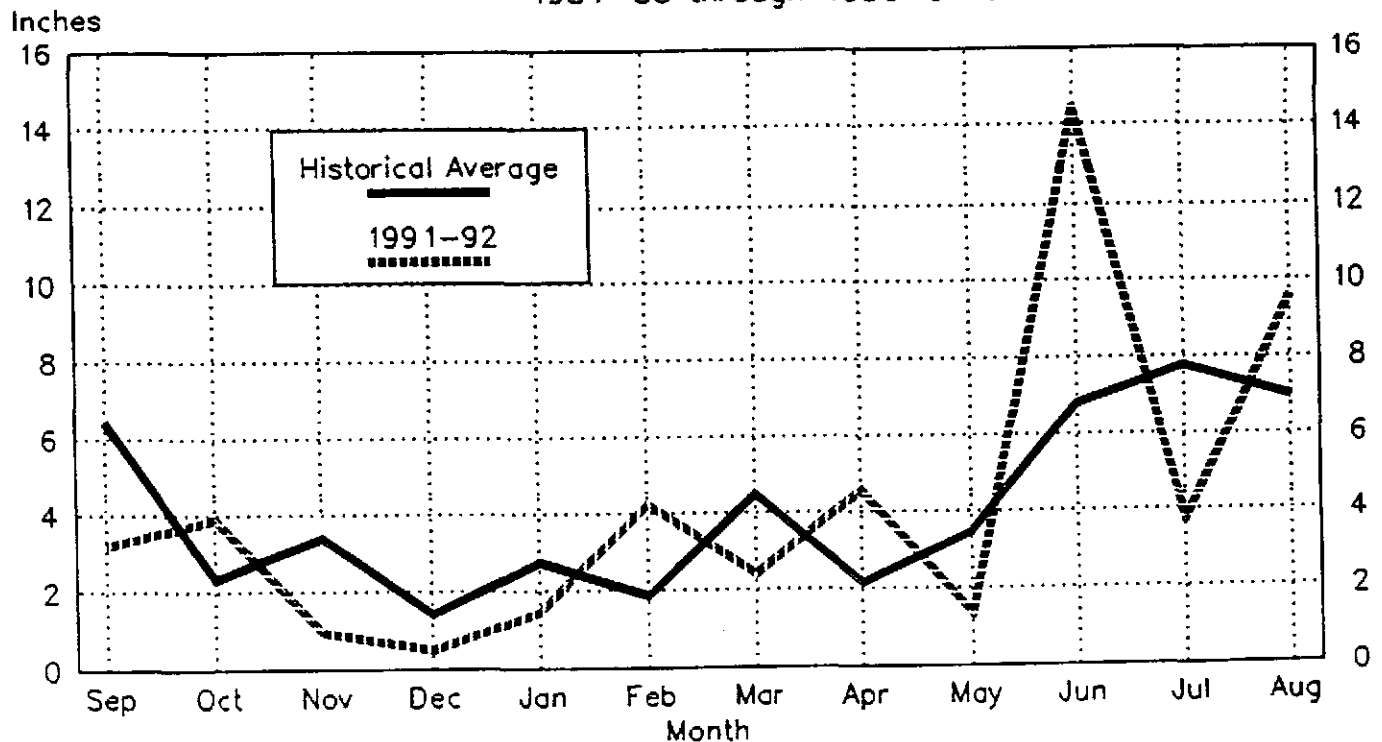
Winter rainfall amounts were below average as shown in the chart below. However, the calendar year ended with virtually all stations recording above normal totals, some as much as 20 inches above.

Although temperatures averaged below normal in January and early February, minimums were below freezing only occasionally with no damage to trees or fruit reported in any area of the State. Conditions were considered ideal for the maturing fruit and trees all winter. The resulting bloom in March and April for the 1992-93 crop season was uniform and heavy.

For most of the spring rainfall was normal, but in late June some areas received heavy rains. This season's early bloom, like that of the previous season, resulted in an earlier than normal conclusion to the harvest.

In the chart below, the 1991-92 average is compared to the historical average which includes data from two stations in each of the citrus producing areas. The ten stations are: Avon Park, Clermont, Clewiston (AG), Immokalee, Lake Alfred, Orlando, Plant City, Ruskin, Stuart, and Vero Beach (4W).

**FLORIDA PRECIPITATION: Average monthly rainfall, ten selected stations,
1984-85 through 1990-91 and 1991-92**



1991-92 PRODUCTION AND TREE CENSUS

PRODUCTION

Florida's citrus production was down slightly from the 1990-91 season. Production of oranges at 139.8 million boxes was 8 percent lower than the 1990-91 season's revised 151.6 million boxes. A mild winter contributed to a light fruit set in many areas.

Grapefruit production was down also. The 42.4 million box crop was 6 percent less than the previous season's 45.1 million boxes. White seedless production was 19.1 million boxes, down slightly but colored varieties increased to 22.1 from 21.8 the previous season. Seedy varieties produced 1.2 million boxes, the least amount in over 70 years.

Although production of Temples and tangelos was down, other specialty varieties (K-Early Citrus, limes, lemons and all tangerine varieties) showed increases.

The all orange FCOJ final yield was 1.54818 gallons per box, up from 1.45383 the previous season. Early and midseason oranges averaged 1.46846 and the late type (Valencia) yield was a record 1.69608.

California's production rebounded dramatically from the 1990-91 freeze season. Orange production was up 158 percent to 66.1 million boxes. Grapefruit production showed a gain with 10.0 million boxes compared to 8.0 the previous season.

Arizona produced 2.38 million boxes of oranges, up from 1.75 million the previous season. Grapefruit production rose to 2.8 million boxes.

Texas produced only 30,000 boxes of oranges and 65,000 boxes of grapefruit following no commercial production the previous freeze affected season.

CITRUS BOX WEIGHTS: Approximate net weight in pounds by fruit type and states

States	Oranges	Grapefruit	Tangerines	Lemons	Limes
FL	90 ^{1/}	85	95	90	88
CA	75	65	75	76	--
TX	85	80	--	--	--
AZ	75	64	75	76	--

^{1/} Includes Temples and tangelos at 90 lbs.

TREE CENSUS

The Florida Agricultural Statistics Service first indexed the State's commercial citrus groves on aerial photography as of January 1966. Ground crews identify all the State's groves by fruit type, row spacing, and year in which set. Photo interpreters in the Orlando office then delineate the groves by variety blocks on photo transparencies at a scale of 1 inch to 660 feet. Variety blocks are measured with planimeters to obtain acreage and then indexed by land section.

The design of the inventory allows for quick and economical updating. Since 1966, the citrus belt has been resurveyed each second winter (1968 through 1992) to determine changes. Photographing begins in November when weather conditions are most favorable and is generally completed in 80 to 90 days. The same three-mile-wide flight lines established in 1966 are photographed on each succeeding flight. Approximately 14,000 square miles of photography are obtained at a 1 to 30,000 scale.

The last statewide survey was conducted as of January 1992. Through 1991, all types of citrus planted totaled 791,290 acres, up 8 percent from the 732,767 acres recorded in January 1990. Increases were highest in lower interior counties. The Northern Area showed recovery from the 1989 freeze as acreage increased by one-third. Acreage by counties and types is shown on page 27.

Photography for the next survey will begin November 1993 and field work will update the acreage records as of January 1994.

FLORIDA, ALL CITRUS: Acres in commercial groves as of January 1966-1992, with percent changes

Year	Acres	Percent change from	
		Previous survey	1966 survey
1966	858,082	--	--
1968	931,249	+8.5	+8.5
1970	941,471	+1.1	+9.7
1972	878,019	-6.7	+2.3
1974	864,098	-1.6	+0.7
1976	852,369	-1.4	-0.7
1978	831,235	-2.5	-3.1
1980	845,283	+1.7	-1.5
1982	847,856	+0.3	-1.2
1984	761,365	-10.2	-11.3
1986	624,492	-18.0	-27.2
1988	697,929	+11.8	-18.7
1990	732,767	+5.0	-14.6
1992	791,290	+8.0	-7.8

1991-92 VALUE OF SALES, PRICES, AND EXPORTS

VALUE

The preliminary on-tree value of all citrus for the 1991-92 season is \$1.234 billion, very close to last season's revised \$1.236 billion. The record high 1987-88 season value was \$1.443 billion.

Preliminary value is based on that part of the crop priced at harvest, all of the fresh and over 50 percent of the processed. When all participation plans and cooperative pools are finalized, a revised value will be calculated.

Preliminary orange prices are up from a revised \$5.89 in 1990-91 to \$6.10 this season. Processing prices were slightly above the previous season.

Grapefruit returned almost \$1.00 per box more this season. Fresh prices were down slightly but processing returns were over \$2.00 per box higher.

Prices for Temples, tangelos, and lemons increased as did early and Dancy tangerine varieties. Honey tangerine, lime, and K-Early Citrus prices declined.

The season average delivered-in price of fruit going into FCOJ as reported by the Florida Citrus Processors Association is \$7.69 per box or \$1.25 per pound of solids. Early-mids averaged \$6.98 per box or \$1.20 per pound of solids and late oranges averaged \$8.95 per box and \$1.32 per pound.

FLORIDA, ALL CITRUS: Value of sales on-tree, crop years 1982-83 through 1991-92

Crop year	Value 1,000 dol.	Crop year	Value 1,000 dol.
1982-83	876,777	1987-88	1,443,116
1983-84	849,457	1988-89	1,429,808
1984-85	984,820	1989-90	952,303
1985-86	725,035	1990-91 ^{1/}	1,236,126
1986-87	941,078	1991-92 ^{2/}	1,234,405

1/ Revised. 2/ Preliminary.

FOREIGN EXPORTS

Fresh fruit exports totaled 23,735,000 4/5 bushel cartons, down slightly from last season. Canada accounts for the most receipts of Florida oranges and specialty fruit while Japan receives the most grapefruit.

A total of 12.5 million gallons of FCOJ were exported, mostly to Canada. There were also 4.0 million gallons of FCGJ exported.

PRICES

All on-tree prices represent the average price received by growers for their fruit by types. Prices are based on records of commercial fresh fruit sales and processed fruit returns. The term "on-tree" relates to fruit value before it is picked and hauled from the grove.

Each season, beginning with the first month that three percent of a fruit type is harvested, monthly estimates are computed. Reports from fresh fruit sales organizations and from packers provide data for an average f.o.b. price. Processors report an average spot and cash price for fruit delivered to their plants. From these values, an estimated charge for picking, hauling, and packing is deducted to arrive at an on-tree price. The anticipated box utilization for the month is used to combine the fresh and processing price to obtain an average price for all methods of sales. At the end of the season, monthly price averages are computed and weighted by boxes utilized, to provide the preliminary season average price.

A year later, after most processed products are sold, cooperatives and firms with participation plans report prices of fruit they handled. These prices, combined with the spot and cash prices collected earlier, are weighted together by varieties to determine the final processing price received by growers. From this price, charges for picking, hauling, and packing, as estimated by University of Florida economists, are deducted to arrive at the final on-tree price received by growers.

COUNTY PRODUCTION

Estimates of citrus production by counties were prepared using objective survey data obtained from the citrus crop estimates program. Production for Florida has been distributed to counties based on the biennial citrus tree census, limb count survey data adjusted for droppage to end of season, and size data at maturity.

Tree numbers by county which are used in the estimates were obtained from the latest tree census. Productivity per tree is obtained from several objective fruit surveys including limb count, size, and droppage. Because of the statistical sampling design, counties with higher production in general have a greater number of samples and, therefore, estimates for these counties can be considered more reliable. Thus, for the same reason, estimates for the production areas are more reliable than for individual counties.

FLORIDA CITRUS: Production of all citrus since 1886-87

Crop year	Type of fruit				Crop year	Type of fruit			
	Oranges	Grape-fruit	Other	Total		Oranges	Grape-fruit	Other	Total
1,000 boxes					1,000 boxes				
1886-87	---	---	---	1,260	1939-40	25,350	15,900	2,745	43,995
1887-88	---	---	---	1,450	1940-41	28,200	24,600	3,180	55,980
1888-89	---	---	---	1,950	1941-42	26,800	19,200	2,650	48,650
1889-90	---	---	---	2,150	1942-43	36,650	27,300	4,925	68,875
1890-91	---	---	---	2,450	1943-44	45,500	31,000	4,490	80,990
1891-92	---	---	---	2,713	1944-45	42,230	22,300	4,670	69,200
1892-93	---	---	---	3,450	1945-46	49,000	32,000	5,200	86,200
1893-94	---	---	---	5,055	1946-47	52,080	26,400	4,790	83,270
1894-95	---	---	---	2,808	1947-48	57,530	29,300	4,440	91,270
1895-96	---	---	---	147	1948-49	57,380	30,200	5,520	93,100
1896-97	---	---	---	218	1949-50	57,790	24,200	5,970	87,960
1897-98	---	---	---	359	1950-51	66,200	33,200	5,980	105,380
1898-99	---	---	---	252	1951-52	76,900	33,000	6,060	115,960
1899-00	---	---	---	274	1952-53	70,500	32,500	6,920	109,920
1900-01	---	---	---	353	1953-54	89,100	40,700	7,070	136,870
1901-02	---	---	---	974	1954-55	85,900	34,800	7,998	128,698
1902-03	---	---	---	1,147	1955-56	88,200	38,300	7,935	134,435
1903-04	---	---	---	1,955	1956-57	90,300	37,400	8,020	135,720
1904-05	---	---	---	2,961	1957-58	81,000	31,100	4,300	116,400
1905-06	---	---	---	3,794	1958-59	83,000	35,200	7,800	126,000
1906-07	---	---	---	3,801	1959-60	87,600	30,500	7,470	125,570
1907-08	---	---	---	3,250	1960-61	82,700	31,600	9,940	124,240
1908-09	---	---	---	4,634	1961-62	108,800	34,800	10,210	153,810
1909-10	5,300	1,100	---	6,400	1962-63	72,500	30,000	5,250	107,750
1910-11	3,600	1,200	---	4,800	1963-64	54,900	26,300	8,620	89,820
1911-12	3,950	1,150	---	5,100	1964-65	82,400	31,900	9,350	123,650
1912-13	6,700	2,000	---	8,700	1965-66	95,900	34,900	10,190	140,990
1913-14	6,200	2,200	---	8,400	1966-67	139,500	43,600	11,895	194,995
1914-15	8,000	2,400	---	10,400	1967-68	100,500	32,900	10,880	144,280
1915-16	6,500	2,400	---	8,900	1968-69	129,700	39,900	12,470	182,070
1916-17	5,700	2,500	---	8,200	1969-70	137,700	37,400	13,915	189,015
1917-18	4,000	2,000	---	6,000	1970-71	142,300	42,900	14,450	199,650
1918-19	6,000	3,500	---	9,500	1971-72	137,000	47,000	16,480	200,480
1919-20	7,550	5,900	478	13,928	1972-73	169,700	45,400	15,450	230,550
1920-21	8,700	5,800	726	15,226	1973-74	165,800	48,100	16,350	230,250
1921-22	7,850	6,700	583	15,133	1974-75	173,300	44,600	17,830	235,730
1922-23	10,150	7,800	785	18,735	1975-76	181,200	49,100	19,180	249,480
1923-24	13,150	8,500	590	22,240	1976-77	186,800	51,500	16,200	254,500
1924-25	10,400	8,900	936	20,236	1977-78	167,800	51,400	16,270	235,470
1925-26	9,500	7,600	730	17,830	1978-79	164,000	50,000	16,190	230,190
1926-27	10,100	8,600	912	19,612	1979-80	206,700	54,800	22,050	283,550
1927-28	8,650	7,500	850	17,000	1980-81	172,400	50,300	15,880	238,580
1928-29	15,000	11,300	1,506	27,806	1981-82	125,800	48,100	15,310	189,210
1929-30	8,950	8,300	858	18,108	1982-83	139,600	39,400	14,600	193,600
1930-31	16,800	15,800	2,408	35,008	1983-84	116,700	40,900	11,945	169,545
1931-32	12,200	10,700	2,009	24,909	1984-85	103,900	44,000	11,005	158,905
1932-33	14,500	11,600	1,910	28,010	1985-86	119,200	46,750	10,065	176,015
1933-34	15,900	10,900	2,012	28,812	1986-87	119,700	49,800	12,030	181,530
1934-35	15,600	15,200	2,015	32,815	1987-88	138,000	53,850	12,250	204,100
1935-36	15,900	11,500	2,112	29,512	1988-89	146,600	54,750	12,500	213,850
1936-37	19,100	18,100	3,045	40,245	1989-90	110,200	35,700	8,285	154,185
1937-38	23,900	14,600	2,370	40,870	1990-91	151,600	45,100	8,960	205,660
1938-39	29,900	23,300	3,495	56,695	1991-92	139,800	42,400	9,615	191,815

Source: See page 45, Data Sources, item 2.

HISTORY OF FLORIDA'S CITRUS INDUSTRY

The citrus tree is a native of the Orient. From there it was carried ever westward by man, to India, to the Mediterranean, and on across the Atlantic. Citrus was brought to the Americas by Columbus. When he landed on November 22, 1493, he brought citrus seeds that were planted on the island of Haiti. The first seeds planted on the mainland of the Americas were brought by the expedition of Juan de Grijalva when he landed in Central America between July 12 and July 20, 1518. The exact date of the introduction of citrus trees into Florida is not known, but from a statement made by Pedro Medendez, dated April 2, 1579, it appears that citrus fruits were grown in abundance around St. Augustine at that time. Early settlers in Florida some two centuries later found wild citrus trees scattered over the State. One of the oldest cultivated groves planted in Florida (Hume, 1926 p.95) is thought to have been the Don Phillipe grove in Pinellas County, planted sometime between 1809 and 1820.

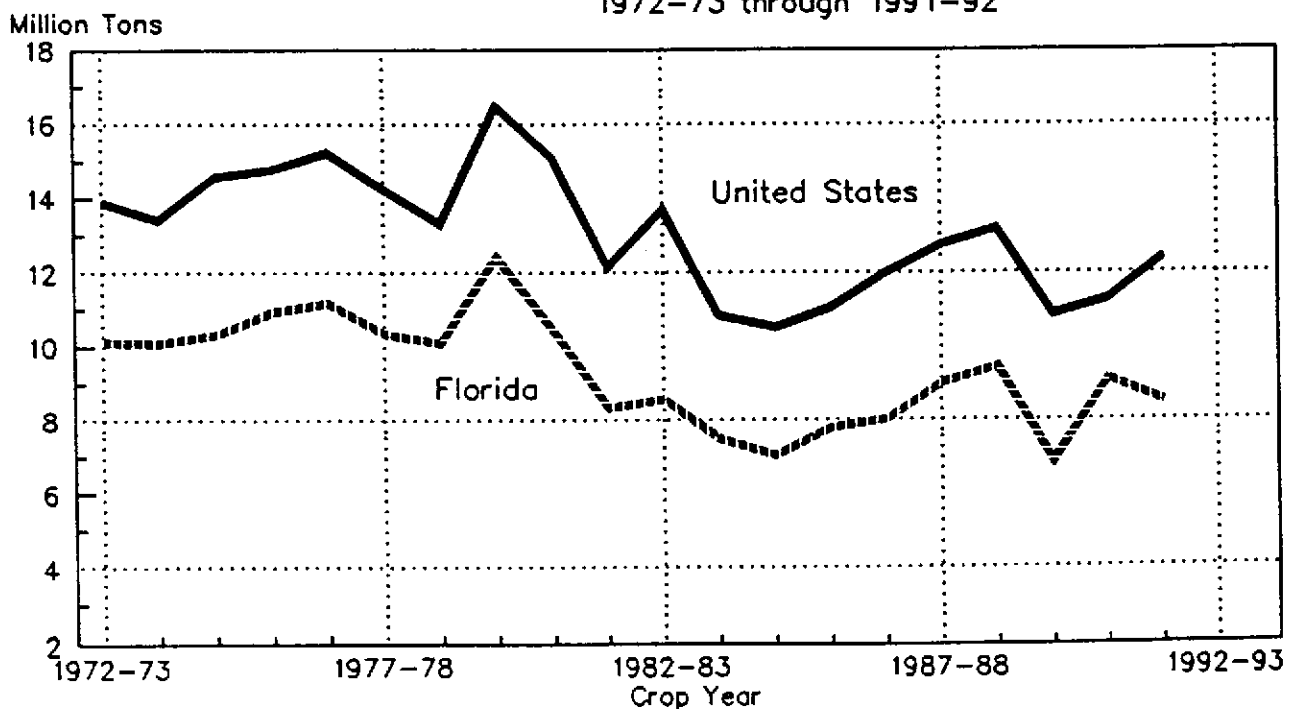
Citrus production in Florida had reached an all time high of more than 5 million boxes when the Great Freeze of 1894-95 almost totally wiped out the citrus industry. It was not until 1909-10 that this level was reached again. In 1991-92, Florida had 69 percent of the Nation's production.

**PRINCIPAL CITRUS FRUITS: Bearing acreage and production, by states,
crop years 1972-73 through 1991-92**

Crop year	Florida		California		Texas		Arizona		United States	
	Bearing acreage	Production 1/	Bearing acreage	Production	Bearing acreage	Production	Bearing acreage	Production	Bearing acreage	Production 1/
	1,000 acres	1,000 tons	1,000 acres	1,000 tons	1,000 acres	1,000 tons	1,000 acres	1,000 tons	1,000 acres	1,000 tons
1972-73	820.2	10,124	221.9	2,498	70.0	803	50.8	469	1,162.9	13,894
1973-74	817.3	10,088	269.1	2,285	67.5	709	52.7	330	1,206.6	13,412
1974-75	812.7	10,337	272.7	3,191	64.1	485	55.6	573	1,205.1	14,586
1975-76	796.2	10,943	272.1	2,842	64.1	687	61.2	316	1,193.6	14,788
1976-77	794.9	11,179	267.4	2,816	63.9	789	58.5	458	1,184.7	15,242
1977-78	756.4	10,349	264.6	2,695	68.4	736	52.6	475	1,142.0	14,255
1978-79	751.5	10,101	265.7	2,189	67.6	632	45.8	407	1,130.6	13,329
1979-80	758.4	12,418	265.3	3,208	71.7	487	47.7	371	1,143.1	16,484
1980-81	753.8	10,470	265.6	3,703	66.8	452	43.7	480	1,129.9	15,105
1881-82	747.9	8,331	264.8	2,541	64.8	808	46.8	459	1,124.3	12,139
1982-83	723.0	8,574	260.0	3,945	66.2	689	42.4	474	1,091.6	13,682
1983-84	639.8	7,485	259.3	2,783	67.6	235	41.2	329	1,007.9	10,832
1984-85	575.9	7,014	254.5	3,069	30.5	0	38.4	442	899.3	10,525
1985-86	507.8	7,785	252.8	2,930	21.8	23	36.5	320	818.9	11,058
1986-87	514.5	8,009	250.7	3,377	25.5	115	35.5	493	826.2	11,994
1987-88	519.5	9,020	250.7	3,235	27.1	213	35.6	293	832.9	12,761
1988-89	528.7	9,456	253.9	3,163	28.9	271	36.0	296	847.5	13,186
1989-90	534.6	6,823	249.4	3,649	31.7	131	36.1	257	851.8	10,860
1990-91	555.7	9,127	251.0	1,837	8.0	0	35.5	321	850.2	11,285
1991-92	583.4	8,510	254.1	3,473	11.0	4	35.2	417	883.7	12,404

1/ Does not include Florida lemons or K-Early Citrus Fruit. Honey tangerines not included prior to 1981-82 and Sunburst tangerines not included prior to 1989-90.

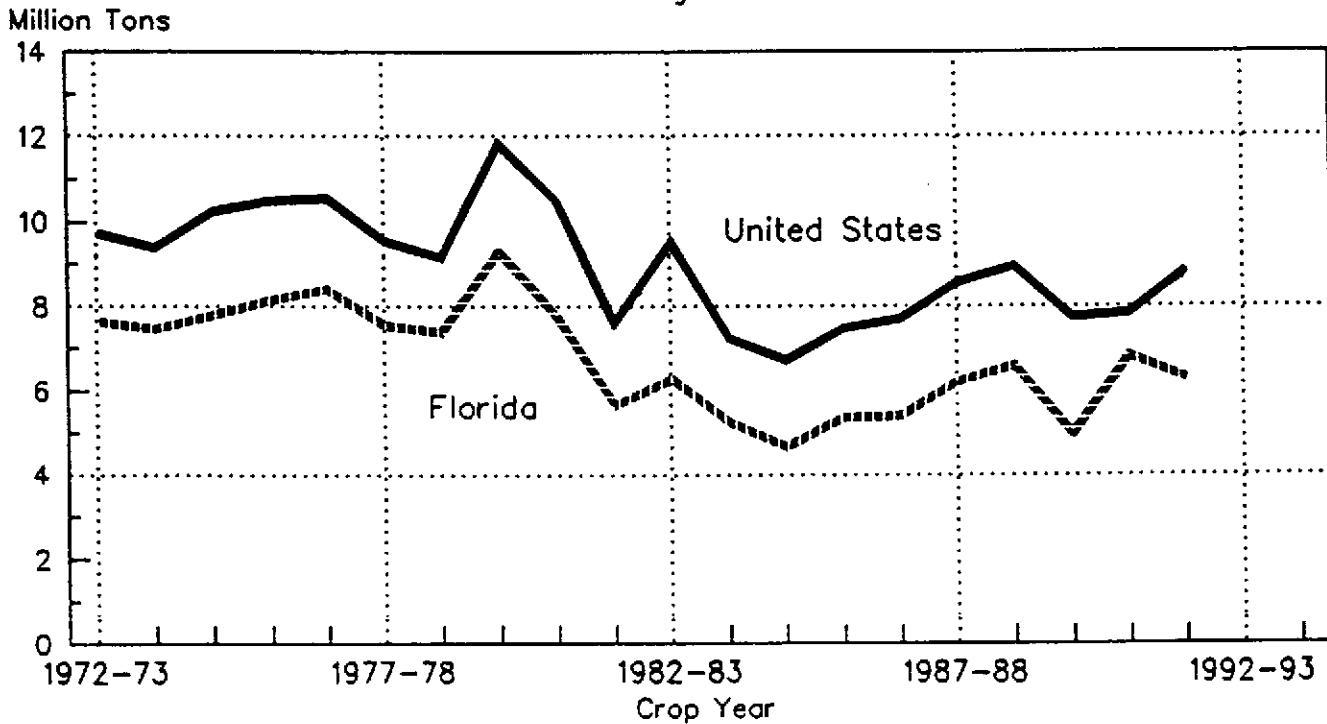
**PRINCIPAL CITRUS FRUITS: Production for the United States and Florida,
1972-73 through 1991-92**



ORANGES: Bearing acreage and production, by states,
crop years 1972-73 through 1991-92

Crop year	Florida		California		Texas		Arizona		United States	
	Bearing acreage	Production	Bearing acreage	Production	Bearing acreage	Production	Bearing acreage	Production	Bearing acreage	Production
	1,000 acres	1,000 tons	1,000 acres	1,000 tons	1,000 acres	1,000 tons	1,000 acres	1,000 tons	1,000 acres	1,000 tons
1972-73	619.6	7,636	188.8	1,579	35.0	332	24.5	190	867.9	9,737
1973-74	614.6	7,461	196.0	1,516	32.5	281	24.4	128	867.5	9,386
1974-75	610.4	7,799	196.9	2,063	30.9	193	24.1	186	862.3	10,241
1975-76	596.4	8,154	197.7	1,980	30.9	259	23.0	100	848.0	10,493
1976-77	594.3	8,406	192.5	1,699	28.2	293	21.0	148	836.0	10,546
1977-78	579.0	7,551	188.6	1,599	28.4	260	16.8	136	812.8	9,546
1978-79	571.5	7,380	187.1	1,399	27.8	272	14.8	109	801.2	9,160
1979-80	576.6	9,302	185.7	2,228	28.0	171	15.7	131	806.0	11,832
1980-81	573.4	7,758	182.7	2,447	25.3	184	13.2	98	794.6	10,487
1881-82	560.2	5,661	180.2	1,572	23.7	252	13.6	115	777.7	7,600
1982-83	536.8	6,282	177.4	2,854	24.0	241	12.6	142	750.8	9,519
1983-84	474.2	5,252	177.1	1,819	24.3	107	12.6	65	688.2	7,243
1984-85	420.1	4,676	175.3	1,966	11.4	0	10.9	77	617.7	6,719
1985-86	367.6	5,364	174.6	2,022	8.3	14	11.0	76	561.5	7,476
1986-87	375.4	5,387	172.9	2,172	10.3	37	10.9	101	569.5	7,697
1987-88	380.2	6,210	172.6	2,212	11.1	61	10.6	68	574.5	8,551
1988-89	388.7	6,597	177.6	2,209	12.0	79	10.4	64	588.7	8,949
1989-90	399.5	4,959	175.1	2,676	13.0	51	10.2	59	597.8	7,745
1990-91	420.9	6,822	178.4	960	3.5	0	10.2	66	613.0	7,848
1991-92	444.3	6,291	181.7	2,479	3.5	1	9.9	90	639.4	8,861

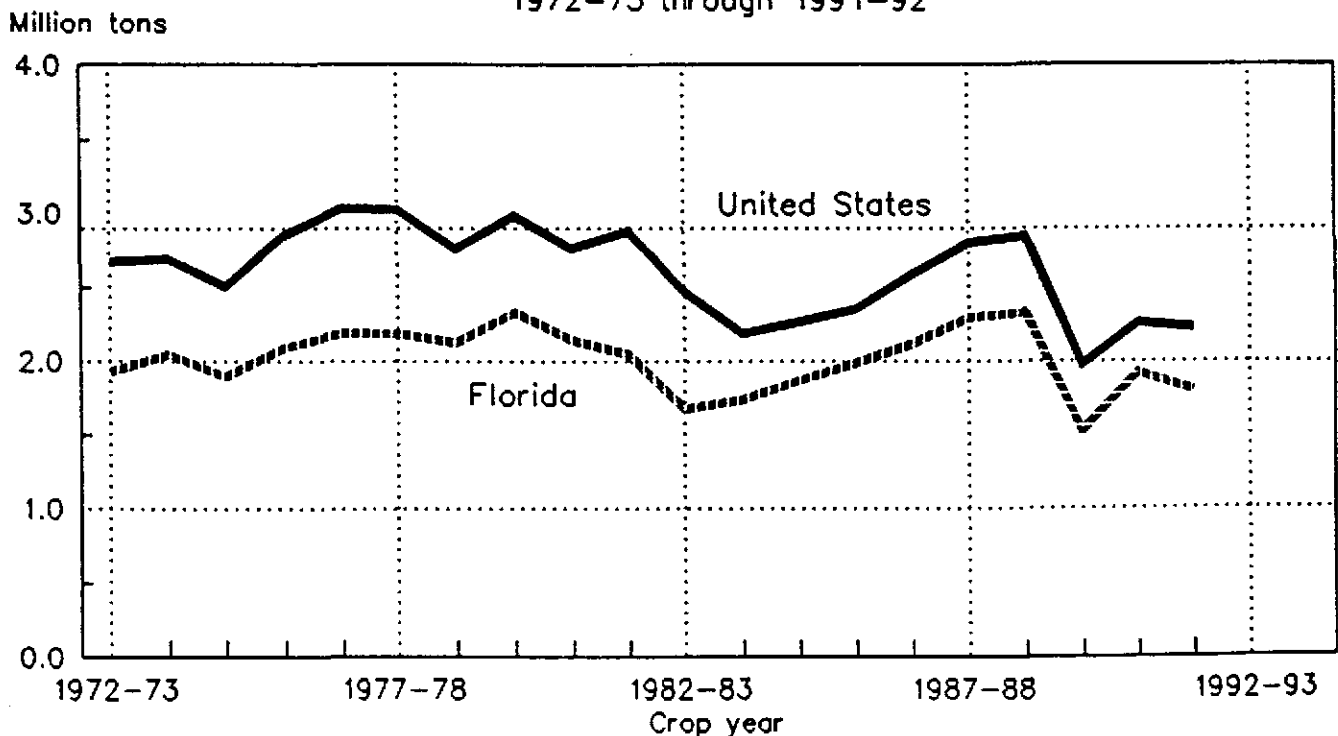
ORANGES: Production for the United States and Florida,
1972-73 through 1991-92



**GRAPEFRUIT: Bearing acreage and production, by states,
crop years 1972-73 through 1991-92**

Crop year	Florida		Texas		California		Arizona		United States	
	Bearing acreage	Production	Bearing acreage	Production	Bearing acreage	Production	Bearing acreage	Production	Bearing acreage	Production
	1,000 acres	1,000 tons	1,000 acres	1,000 tons	1,000 acres	1,000 tons	1,000 acres	1,000 tons	1,000 acres	1,000 tons
1972-73	114.6	1,930	35.0	472	13.1	189	8.0	85	170.7	2,676
1973-74	115.8	2,044	35.0	428	14.3	154	8.2	66	173.3	2,692
1974-75	115.4	1,897	33.1	292	15.8	226	9.3	89	173.6	2,504
1975-76	117.9	2,088	33.1	428	16.4	234	9.6	100	177.0	2,850
1976-77	119.3	2,190	35.1	496	16.6	250	10.2	96	181.2	3,032
1977-78	120.3	2,184	40.1	476	17.4	274	10.8	96	188.6	3,030
1978-79	124.6	2,125	39.8	360	19.5	200	8.9	72	192.8	2,757
1979-80	126.4	2,329	43.8	316	21.3	245	8.4	96	199.9	2,986
1980-81	125.6	2,138	41.5	268	21.8	263	8.1	90	197.0	2,759
1881-82	127.8	2,044	41.1	556	22.0	201	8.2	77	199.1	2,878
1982-83	128.6	1,674	42.2	448	21.7	238	6.8	105	199.3	2,465
1983-84	119.6	1,738	43.3	128	21.9	238	6.8	80	191.6	2,184
1984-85	115.5	1,870	19.1	0	21.1	289	7.1	107	162.8	2,266
1985-86	105.1	1,987	13.5	9	20.9	266	5.7	90	145.2	2,352
1986-87	106.0	2,116	15.2	77	20.8	305	5.9	88	147.9	2,586
1987-88	106.0	2,289	16.0	152	20.7	298	6.0	62	148.7	2,801
1988-89	106.9	2,327	16.9	192	19.9	263	6.5	62	150.2	2,844
1989-90	103.0	1,517	18.7	80	19.2	310	6.4	71	147.3	1,978
1990-91	104.2	1,916	4.5	0	18.3	263	6.2	77	133.2	2,256
1991-92	104.7	1,802	7.5	3	18.4	330	6.2	89	136.8	2,224

**GRAPEFRUIT: Production for the United States and Florida,
1972-73 through 1991-92**



FLORIDA CITRUS: Acreage, yield, production, utilization, season average price, and value for crop years 1972-73 through 1991-92 1/

Crop year	Bearing acreage	Yield per acre	Utilization of production			On-tree	
			Total	Fresh	Processed	Price per box	Value of production
	1,000 acres	Boxes		1,000 boxes		Dollars	1,000 dollars
ALL ROUND ORANGES							
1972-73	619.6	274	169,700	12,223	157,477	1.56	265,361
1973-74	614.6	270	165,800	11,090	154,710	1.47	244,691
1974-75	610.4	284	173,300	13,393	159,907	1.62	280,350
1975-76	596.4	304	181,200	11,730	169,470	1.77	321,449
1976-77	594.3	314	186,800	8,878	177,922	2.17	405,982
1977-78	579.0	290	167,800	9,966	157,834	4.14	693,677
1978-79	571.5	287	164,000	11,701	152,299	4.66	764,961
1979-80	576.6	358	206,700	10,990	195,710	3.72	768,877
1980-81	573.4	301	172,400	8,276	164,124	4.04	697,231
1981-82	560.2	225	125,800	7,620	118,180	4.28	538,686
1982-83	536.8	260	139,600	10,320	129,280	5.15	718,420
1983-84	474.3	246	116,700	7,640	109,060	5.75	670,618
1984-85	420.1	247	103,900	6,652	97,248	7.10	737,923
1985-86	367.6	324	119,200	8,960	110,240	3.94	469,959
1986-87	375.4	319	119,700	8,870	110,830	5.22	624,771
1987-88	380.2	363	138,000	9,520	128,480	7.58	1,046,700
1988-89	388.7	377	146,600	8,488	138,112	7.41	1,086,319
1989-90	399.5	276	110,200	5,922	104,278	6.21	684,226
1990-91	420.9	360	151,600	12,451	139,149	5.89	892,675
1991-92	444.3	315	139,800	11,561	128,239	6.10	853,287
EARLY AND MIDSEASON ORANGES							
1972-73	320.3	281	90,000	6,681	83,319	1.43	128,873
1973-74	316.3	291	92,100	6,110	85,990	1.38	127,438
1974-75	314.8	307	96,600	7,402	89,198	1.46	140,792
1975-76	308.4	320	98,800	6,485	92,315	1.69	166,911
1976-77	306.9	375	115,000	6,131	108,869	1.89	216,967
1977-78	299.0	295	88,300	5,750	82,550	3.90	344,268
1978-79	295.5	308	91,000	6,325	84,675	4.44	403,767
1979-80	298.9	394	117,900	6,476	111,424	3.59	423,324
1980-81	297.2	355	105,600	5,788	99,812	3.67	387,714
1981-82	289.6	256	74,000	4,929	69,071	4.27	316,316
1982-83	277.8	253	70,200	6,067	64,133	4.88	342,914
1983-84	237.3	294	69,700	4,939	64,761	5.09	354,800
1984-85	198.3	277	55,000	4,418	50,582	7.30	401,369
1985-86	182.3	352	64,200	5,121	59,079	3.92	251,366
1986-87	189.1	348	65,800	5,267	60,533	4.56	300,290
1987-88	198.1	396	78,500	5,870	72,630	6.72	527,169
1988-89	205.4	415	85,300	5,434	79,866	6.69	571,082
1989-90	215.3	316	68,100	4,851	63,249	6.01	409,376
1990-91	223.3	392	87,500	5,966	81,534	5.38	471,049
1991-92	243.2	343	83,400	7,781	75,619	5.49	458,042

1/ 1991-92 preliminary.

FLORIDA CITRUS: Acreage, yield, production, utilization, season average price, and value for crop years 1972-73 through 1991-92 1/

Crop year	Bearing acreage	Yield per acre	Utilization of production			On-tree	
			Total	Fresh	Processed	Price per box	Value of production
	1,000 acres	Boxes		1,000 boxes		Dollars	1,000 dollars
LATE (VALENCIA) ORANGES							
1972-73	299.3	266	79,700	5,542	74,158	1.71	136,488
1973-74	298.3	247	73,700	4,980	68,720	1.59	117,253
1974-75	295.6	259	76,700	5,991	70,709	1.82	139,558
1975-76	288.0	286	82,400	5,245	77,155	1.88	154,538
1976-77	287.4	250	71,800	2,747	69,053	2.63	189,015
1977-78	280.0	284	79,500	4,216	75,284	4.40	349,409
1978-79	276.0	264	73,000	5,376	67,624	4.95	361,194
1979-80	277.7	320	88,800	4,514	84,286	3.89	345,553
1980-81	276.2	242	66,800	2,488	64,312	4.63	309,517
1981-82	270.6	191	51,800	2,691	49,109	4.29	222,370
1982-83	259.0	268	69,400	4,253	65,147	5.41	375,506
1983-84	237.0	198	47,000	2,701	44,299	6.72	315,818
1984-85	221.8	220	48,900	2,234	46,666	6.88	336,554
1985-86	185.3	297	55,000	3,839	51,161	3.97	218,593
1986-87	186.3	289	53,900	3,603	50,297	6.02	324,481
1987-88	182.1	327	59,500	3,650	55,850	8.73	519,531
1988-89	183.3	334	61,300	3,054	58,246	8.41	515,237
1989-90	184.2	229	42,100	1,071	41,029	6.53	274,850
1990-91	197.6	324	64,100	6,485	57,615	6.58	421,626
1991-92	201.1	280	56,400	3,780	52,620	7.01	395,245
TEMPLES							
1972-73	22.3	229	5,100	2,445	2,655	1.95	9,959
1973-74	21.9	242	5,300	1,925	3,375	1.64	8,669
1974-75	21.9	242	5,300	1,908	3,392	1.68	8,893
1975-76	20.5	268	5,500	2,329	3,171	1.79	9,870
1976-77	20.3	187	3,800	1,184	2,616	2.16	8,189
1977-78	18.9	259	4,900	2,049	2,851	3.92	19,226
1978-79	18.3	257	4,700	2,135	2,565	4.89	22,968
1979-80	18.2	330	6,000	2,784	3,216	2.89	17,356
1980-81	17.7	203	3,600	1,107	2,493	4.21	15,170
1981-82	16.8	190	3,200	838	2,362	4.01	12,824
1982-83	15.8	297	4,700	1,563	3,137	3.99	18,735
1983-84	13.5	215	2,900	762	2,138	5.34	15,476
1984-85	12.2	266	3,250	626	2,624	5.59	18,162
1985-86	10.0	295	2,950	913	2,037	3.01	8,870
1986-87	9.4	362	3,400	1,053	2,347	3.60	12,236
1987-88	9.3	382	3,550	1,292	2,258	5.69	20,196
1988-89	9.3	403	3,750	869	2,881	5.46	20,474
1989-90	8.0	175	1,400	139	1,261	5.64	7,889
1990-91	7.7	325	2,500	794	1,706	6.31	15,786
1991-92	7.1	331	2,350	856	1,494	6.55	15,403

1/ 1991-92 preliminary.

FLORIDA CITRUS: Acreage, yield, production, utilization, season average price, and value for crop years 1972-73 through 1991-92 1/

Crop year	Bearing acreage	Yield per acre	Utilization of production			On-tree	
			Total	Fresh	Processed	Price per box	Value of production
	1,000 acres	Boxes		1,000 boxes		Dollars	1,000 dollars
ALL GRAPEFRUIT							
1972-73	114.6	396	45,400	17,046	28,354	2.08	94,635
1973-74	115.8	415	48,100	18,731	29,369	1.66	79,879
1974-75	115.4	386	44,600	18,797	25,806	1.72	76,367
1975-76	117.9	416	49,100	20,369	28,731	1.47	72,155
1976-77	119.3	432	51,500	16,393	35,107	1.58	81,116
1977-78	120.3	427	51,400	18,038	33,362	1.64	84,438
1978-79	124.6	401	50,000	19,790	30,210	2.41	120,128
1979-80	126.4	434	54,800	19,501	35,299	3.31	181,208
1980-81	125.6	400	50,300	17,167	33,133	3.60	181,155
1981-82	127.8	376	48,100	16,719	31,381	2.09	100,597
1982-83	128.6	306	39,400	18,313	21,087	1.96	77,221
1983-84	119.6	342	40,900	16,661	24,239	2.72	111,158
1984-85	115.5	381	44,000	14,988	29,012	3.67	161,356
1985-86	105.1	445	46,750	19,620	27,130	4.09	191,068
1986-87	106.0	470	49,800	20,938	28,862	4.98	248,120
1987-88	106.0	508	53,850	23,110	30,740	5.57	299,887
1988-89	106.9	512	54,750	23,902	30,848	4.45	243,874
1989-90	103.0	347	35,700	13,344	22,356	5.65	201,756
1990-91	104.2	433	45,100	23,923	21,177	5.66	255,328
1991-92	104.7	405	42,400	22,844	19,556	6.64	281,500
SEEDY GRAPEFRUIT							
1972-73	24.3	420	10,200	281	9,919	1.63	16,672
1973-74	23.6	424	10,000	138	9,862	1.31	13,117
1974-75	23.3	309	7,200	147	7,053	0.87	6,270
1975-76	22.6	345	7,800	109	7,691	0.85	6,668
1976-77	22.5	404	9,100	64	9,036	1.20	10,920
1977-78	21.0	400	8,400	85	8,315	1.45	12,180
1978-79	21.3	343	7,300	71	7,229	1.84	13,432
1979-80	20.0	395	7,900	106	7,794	3.04	24,016
1980-81	19.6	372	7,300	69	7,231	2.92	21,316
1981-82	19.3	311	6,000	2/	6,000	1.13	6,780
1982-83	19.0	253	4,800	2/	4,800	0.70	3,360
1983-84	15.3	295	4,500	2/	4,500	2.01	9,045
1984-85	12.7	228	2,900	2/	2,900	2.58	7,482
1985-86	10.3	306	3,150	2/	3,150	3.27	10,301
1986-87	9.5	305	2,900	2/	2,900	4.27	12,383
1987-88	8.9	309	2,750	2/	2,750	4.99	13,723
1988-89	8.7	385	3,350	2/	3,350	3.68	12,328
1989-90	7.1	197	1,400	2/	1,400	3.84	5,376
1990-91	6.1	262	1,600	2/	1,600	3.93	6,288
1991-92	4.9	245	1,200	2/	1,200	4.81	5,772

1/ 1991-92 preliminary. 2/ Fresh sales insignificant, included in processed

FLORIDA CITRUS: Acreage, yield, production, utilization, season average
price, and value for crop years 1972-73 through 1991-92 1/

Crop year	Bearing acreage	Yield per acre	Utilization of production			On-tree	
			Total	Fresh	Processed	Price per box	Value of production
	1,000 acres	Boxes		1,000 boxes		Dollars	1,000 dollars
WHITE SEEDLESS GRAPEFRUIT							
1972-73	60.3	390	23,500	9,507	13,993	2.06	48,364
1973-74	61.3	423	25,900	10,748	15,152	1.58	40,919
1974-75	61.1	424	25,900	11,008	14,892	1.55	40,282
1975-76	63.3	447	28,300	11,315	16,985	1.29	36,557
1976-77	63.6	470	29,900	9,805	20,095	1.49	44,690
1977-78	64.2	447	28,700	9,026	19,674	1.47	42,323
1978-79	66.0	445	29,400	10,179	19,221	2.21	65,021
1979-80	66.9	465	31,100	8,900	22,200	3.12	97,086
1980-81	66.6	426	28,400	8,195	20,205	3.46	98,285
1981-82	65.8	415	27,300	8,329	18,971	1.92	52,370
1982-83	65.4	333	21,800	9,045	12,755	1.51	32,941
1983-84	60.5	380	23,000	7,642	15,358	2.08	47,885
1984-85	58.2	426	24,800	5,350	19,450	3.02	74,956
1985-86	53.4	479	25,600	6,735	18,865	3.56	91,107
1986-87	53.0	508	26,900	7,086	19,814	4.45	119,693
1987-88	51.6	566	29,200	8,020	21,180	5.35	156,360
1988-89	51.1	542	27,700	8,033	19,667	4.33	119,980
1989-90	48.2	373	18,000	4,054	13,946	5.21	93,737
1990-91	47.4	458	21,700	8,191	13,509	4.59	99,622
1991-92	44.9	425	19,100	6,756	12,344	6.63	126,681
COLORED SEEDLESS GRAPEFRUIT							
1972-73	30.0	390	11,700	7,258	4,442	2.53	29,599
1973-74	30.9	395	12,200	7,845	4,355	2.12	25,843
1974-75	31.0	371	11,500	7,642	3,858	2.59	29,815
1975-76	32.0	406	13,000	8,945	4,055	2.23	28,930
1976-77	33.2	377	12,500	6,524	5,976	2.04	25,506
1977-78	35.1	407	14,300	8,927	5,373	2.09	29,935
1978-79	37.3	357	13,300	9,540	3,760	3.13	41,675
1979-80	39.5	400	15,800	10,495	5,305	3.80	60,106
1980-81	39.4	371	14,600	8,903	5,697	4.22	61,554
1981-82	42.7	347	14,800	8,390	6,410	2.80	41,447
1982-83	44.2	290	12,800	9,268	3,532	3.20	40,920
1983-84	43.8	306	13,400	9,019	4,381	4.05	54,228
1984-85	44.6	365	16,300	9,638	6,662	4.84	78,918
1985-86	41.4	435	18,000	12,885	5,115	4.98	89,660
1986-87	43.5	460	20,000	13,852	6,148	5.80	116,044
1987-88	45.5	481	21,900	15,090	6,810	5.93	129,804
1988-89	47.1	503	23,700	15,869	7,831	4.71	111,566
1989-90	47.7	342	16,300	9,290	7,010	6.30	102,643
1990-91	50.7	430	21,800	15,732	6,068	6.85	149,418
1991-92	54.9	403	22,100	16,088	6,012	6.74	149,047

1/ 1991-92 preliminary.

FLORIDA CITRUS: Acreage, yield, production, utilization, season average price, and value for crop years 1972-73 through 1991-92 1/

Crop year	Bearing acreage	Yield per acre	Utilization of production			On-tree	
			Total	Fresh	Processed	Price per box	Value of production
	1,000 acres	Boxes	1,000 boxes			Dollars	1,000 dollars
TANGELOS							
1972-73	19.2	161	3,100	1,433	1,667	1.39	4,320
1973-74	18.8	197	3,700	1,596	2,104	1.25	4,631
1974-75	18.9	249	4,700	2,363	2,337	1.45	6,833
1975-76	18.6	296	5,500	2,245	3,255	1.42	7,806
1976-77	18.4	261	4,800	2,295	2,505	1.42	6,814
1977-78	17.9	274	4,900	1,987	2,913	3.29	16,144
1978-79	17.1	246	4,200	1,721	2,479	3.90	16,360
1979-80	17.3	370	6,400	1,807	4,593	2.87	18,351
1980-81	16.8	292	4,900	2,056	2,844	3.92	19,226
1981-82	16.1	317	5,100	1,780	3,320	3.58	18,264
1982-83	15.6	244	3,800	1,878	1,922	4.37	16,596
1983-84	12.3	293	3,600	1,596	2,004	4.28	15,395
1984-85	10.1	356	3,600	1,468	2,132	7.08	25,501
1985-86	9.5	311	2,950	1,338	1,612	4.06	11,980
1986-87	9.5	421	4,000	1,310	2,690	3.72	14,891
1987-88	9.4	447	4,200	1,395	2,805	5.58	23,435
1988-89	9.5	400	3,800	1,348	2,452	6.31	23,994
1989-90	8.9	331	2,950	1,118	1,832	5.10	15,046
1990-91	8.0	331	2,650	1,186	1,464	6.11	16,203
1991-92	9.8	265	2,600	1,307	1,293	7.06	18,360
ALL TANGERINES 2/							
1972-73	19.4	155	3,000	2,018	982	2.37	7,123
1973-74	19.1	147	2,800	2,055	745	2.82	7,885
1974-75	19.4	160	3,100	2,211	889	3.05	9,463
1975-76	18.0	189	3,400	2,362	1,038	3.02	10,251
1976-77	17.9	184	3,300	2,317	983	3.29	10,855
1977-78	16.5	194	3,200	1,901	1,299	4.79	15,339
1978-79	15.9	220	3,500	1,891	1,609	4.99	17,465
1979-80	15.2	257	3,900	2,339	1,561	4.25	16,594
1980-81	15.0	200	3,000	1,905	1,095	5.45	16,361
1981-82	20.6	199	4,100	1,917	2,183	5.91	24,236
1982-83	18.9	180	3,400	2,170	1,230	7.81	26,556
1983-84	13.2	225	2,975	1,858	1,117	7.08	21,075
1984-85	11.3	163	1,840	945	895	13.66	25,127
1985-86	8.8	222	1,950	1,189	761	11.55	22,515
1986-87	7.5	312	2,340	1,462	878	10.92	25,563
1987-88	7.6	322	2,450	1,614	836	12.99	31,831
1988-89	7.7	377	2,900	1,639	1,261	12.64	36,652
1989-90	8.5	200	1,700	999	701	15.28	25,981
1990-91	8.7	224	1,950	1,227	723	17.10	33,349
1991-92	11.2	232	2,600	1,966	634	18.07	46,993

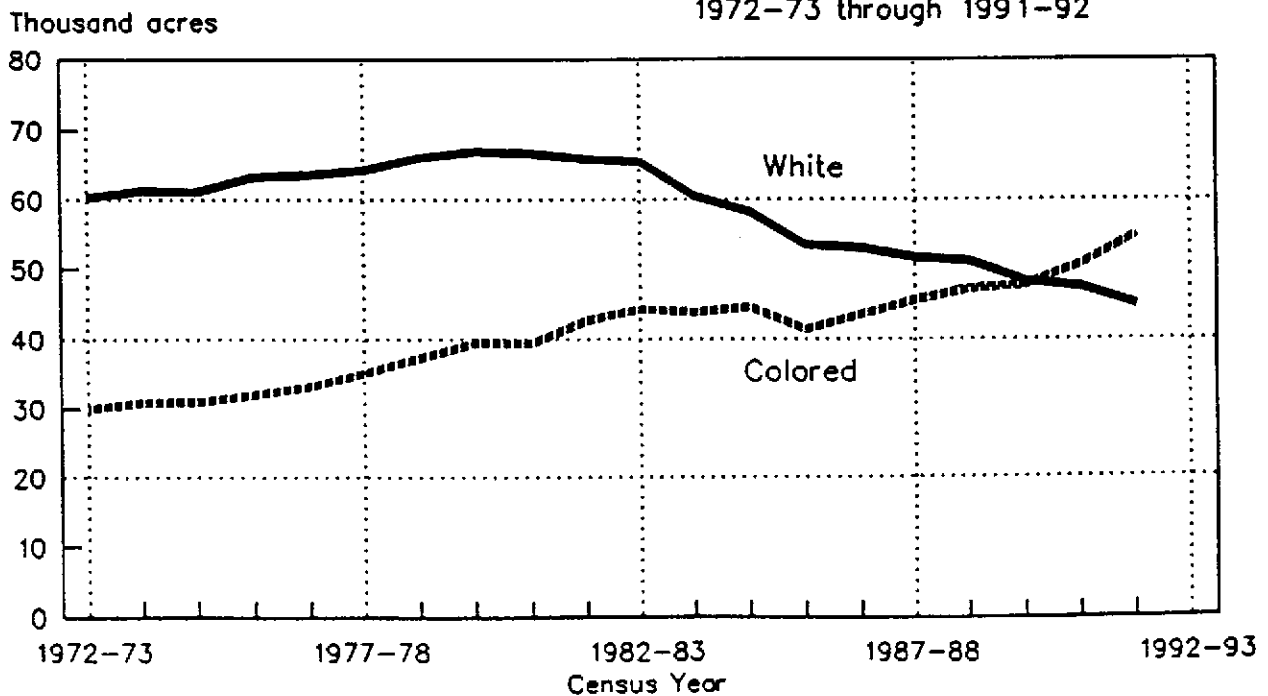
1/ 1991-92 preliminary. 2/ Honey tangerines not included prior to 1981-82 and Sunburst tangerines not included prior to 1989-90.

FLORIDA CITRUS: Acreage, yield, production, utilization, season average price, and value for crop years 1972-73 through 1991-92 1/

Crop year	Bearing acreage	Yield per acre	Utilization of production			On-tree	
			Total	Fresh	Processed	Price per box	Value of production
	1,000 acres	Boxes	1,000 boxes			Dollars	1,000 dollars
LIMES							
1972-73	4.5	244	1,100	517	583	4.25	4,670
1973-74	4.4	239	1,050	479	571	5.10	5,351
1974-75	4.4	250	1,100	493	607	5.35	5,889
1975-76	4.4	245	1,080	586	494	6.70	7,235
1976-77	4.5	222	1,000	514	486	8.60	8,596
1977-78	3.8	121	460	340	120	15.72	7,229
1978-79	4.1	176	720	481	239	12.44	8,948
1979-80	4.7	234	1,100	622	478	8.18	8,996
1980-81	5.3	226	1,200	697	503	6.58	7,891
1981-82	6.4	203	1,300	625	675	7.88	10,238
1982-83	7.3	233	1,700	975	725	8.39	14,262
1983-84	7.0	206	1,440	825	615	7.46	10,736
1984-85	6.7	245	1,640	1,025	615	7.27	11,927
1985-86	6.8	254	1,725	880	845	7.94	13,692
1986-87	6.7	216	1,450	850	600	8.57	12,424
1987-88	7.0	186	1,300	860	440	12.69	16,493
1988-89	6.6	189	1,250	950	300	11.29	14,112
1989-90	6.7	246	1,650	1,010	640	8.26	13,634
1990-91	6.2	234	1,450	930	520	13.99	20,289
1991-92	6.3	254	1,600	1,070	530	9.12	14,589

1/ 1991-92 preliminary.

FLORIDA SEEDLESS GRAPEFRUIT: Bearing acreage by type, 1972-73 through 1991-92



CITRUS FRUITS: Utilization, season average on-tree price, and value by types, by states, crop years 1986-87 through 1991-92 1/

Crop year	Utilization of production			Price per box			Value of production		
	Fresh	Proc	Total	Fresh	Proc	Total	Fresh	Proc	Total
	1,000 boxes			Dollars per box			1,000 dollars		
UNITED STATES ORANGES									
1986-87	53,315	127,860	181,175	7.97	4.45	5.39	427,974	553,023	980,997
1987-88	53,521	146,729	200,250	8.41	6.78	7.18	450,588	974,259	1,424,847
1988-89	51,859	157,191	209,050	8.21	6.76	7.08	426,433	1,044,149	1,470,582
1989-90	54,844	129,571	184,415	8.49	5.25	6.13	463,303	665,323	1,128,626
1990-91	30,069	148,881	178,950	14.84	5.29	6.78	462,185	777,794	1,239,979
1991-92	54,859	153,451	208,310	8.42	5.00	5.83	461,678	744,349	1,206,027
FLORIDA ORANGES									
1986-87	8,870	110,830	119,700	6.18	5.14	5.22	54,828	569,943	624,771
1987-88	9,520	128,480	138,000	7.96	7.56	7.58	75,749	970,951	1,046,700
1988-89	8,488	138,112	146,600	7.61	7.40	7.41	64,628	1,021,691	1,086,319
1989-90	5,922	104,278	110,200	10.31	5.98	6.21	61,053	623,173	684,226
1990-91	12,451	139,149	151,600	8.46	5.66	5.89	105,289	787,386	892,675
1991-92	11,561	128,239	139,800	8.52	5.89	6.10	98,467	754,820	853,287
CALIFORNIA ORANGES									
1986-87	41,700	16,200	57,900	8.50	-1.03	5.83	354,468	-16,704	337,764
1987-88	41,300	17,700	59,000	8.55	0.15	6.03	352,984	2,646	355,630
1988-89	40,600	18,300	58,900	8.37	1.15	6.12	339,703	20,961	360,664
1989-90	47,100	24,300	71,400	8.22	1.63	5.98	387,375	39,525	426,900
1990-91	16,200	9,400	25,600	20.29	-0.98	12.48	328,740	-9,178	319,562
1991-92	41,500	24,600	66,100	8.47	-0.41	5.16	351,470	-10,150	341,320
TEXAS ORANGES									
1986-87	785	90	875	7.69	2.47	7.15	6,034	222	6,256
1987-88	1,276	154	1,430	8.05	3.27	7.53	10,272	503	10,775
1988-89	1,556	294	1,850	6.92	3.67	6.40	10,766	1,080	11,846
1989-90	663	542	1,205	7.92	3.00	5.71	5,251	1,627	6,878
1990-91	--	--	--	--	--	--	--	--	--
1991-92	30	--	30	12.77	--	12.77	383	--	383
ARIZONA ORANGES									
1986-87	1,960	740	2,700	6.45	-0.59	4.52	12,644	-438	12,206
1987-88	1,425	395	1,820	8.13	0.40	6.45	11,583	159	11,742
1988-89	1,215	485	1,700	9.33	0.86	6.91	11,336	417	11,753
1989-90	1,159	451	1,610	8.30	2.21	6.60	9,624	998	10,622
1990-91	1,418	332	1,750	19.86	-1.25	15.85	28,156	-414	27,742
1991-92	1,768	612	2,380	6.42	-0.52	4.64	11,358	-321	11,037

1/ 1991-92 preliminary.

CITRUS FRUITS: Utilization, season average on-tree price, and value by types, by states, crop years 1987-88 through 1991-92 1/

Crop year	Utilization of production			Price per box			Value of production		
	Fresh	Proc	Total	Fresh	Proc	Total	Fresh	Proc	Total
	1,000 boxes			Dollars per box			1,000 dollars		
FLORIDA EARLY AND MIDSEASON ORANGES (INCLUDING NAVELS)									
1987-88	5,870	72,630	78,500	7.65	6.64	6.72	44,906	482,263	527,169
1988-89	5,434	79,866	85,300	7.65	6.63	6.69	41,570	529,512	571,082
1989-90	4,851	63,249	68,100	9.55	5.74	6.01	46,327	363,049	409,376
1990-91	5,966	81,534	87,500	8.30	5.17	5.38	49,518	421,531	471,049
1991-92	7,781	75,619	83,400	9.40	5.09	5.49	73,141	384,901	458,042
FLORIDA NAVELS									
1987-88	2,046	554	2,600	10.45	4.63	9.21	21,381	2,565	23,946
1988-89	2,312	788	3,100	10.05	4.43	8.62	23,236	3,491	26,727
1989-90	2,135	765	2,900	11.85	3.38	9.62	25,300	2,586	27,886
1990-91	2,787	913	3,700	10.70	2.85	8.76	29,821	2,602	32,423
1991-92	2,992	708	3,700	12.40	3.44	10.69	37,101	2,436	39,537
FLORIDA LATE (VALENCIA) ORANGES									
1987-88	3,650	55,850	59,500	8.45	8.75	8.73	30,843	488,688	519,531
1988-89	3,054	58,246	61,300	7.55	8.45	8.41	23,058	492,179	515,237
1989-90	1,071	41,029	42,100	13.75	6.34	6.53	14,726	260,124	274,850
1990-91	6,485	57,615	64,100	8.60	6.35	6.58	55,771	365,855	421,626
1991-92	3,780	52,620	56,400	6.70	7.03	7.01	25,326	369,919	395,245
CALIFORNIA NAVELS AND MISCELLANEOUS ORANGES									
1987-88	24,900	6,600	31,500	7.84	-0.44	6.11	195,216	-2,904	192,312
1988-89	25,900	8,100	34,000	7.69	0.17	5.90	199,171	1,377	200,548
1989-90	32,300	12,000	44,300	7.97	1.91	6.33	257,431	22,920	280,351
1990-91	9,200	6,600	15,800	14.90	-0.89	8.30	137,080	-5,874	131,206
1991-92	26,500	8,600	35,100	10.58	-0.25	7.93	280,370	-2,150	278,220
CALIFORNIA VALENCIA ORANGES									
1987-88	16,400	11,100	27,500	9.62	0.50	5.94	157,768	5,550	163,318
1988-89	14,700	10,200	24,900	9.56	1.92	6.43	140,532	19,584	160,116
1989-90	14,800	12,300	27,100	8.78	1.35	5.41	129,944	16,605	146,549
1990-91	7,000	2,800	9,800	27.38	-1.18	19.22	191,660	-3,304	188,356
1991-92	15,000	16,000	31,000	4.74	-0.50	2.04	71,100	-8,000	63,100
FLORIDA TEMPLES									
1987-88	1,292	2,258	3,550	7.05	4.91	5.69	9,109	11,087	20,196
1988-89	869	2,881	3,750	7.15	4.95	5.46	6,213	14,261	20,474
1989-90	139	1,261	1,400	17.75	4.30	5.64	2,467	5,422	7,889
1990-91	794	1,706	2,500	10.60	4.32	6.31	8,416	7,370	15,786
1991-92	856	1,494	2,350	8.50	5.44	6.55	7,276	8,127	15,403

1/ 1991-92 preliminary.

CITRUS FRUITS: Utilization, season average on-tree price, and value by types, by states, crop years 1986-87 through 1991-92 1/

Crop year	Utilization of production			Price per box			Value of production		
	Fresh	Proc	Total	Fresh	Proc	Total	Fresh	Proc	Total
	1,000 boxes			Dollars per box			1,000 dollars		
UNITED STATES GRAPEFRUIT									
1986-87	30,083	33,692	63,775	6.27	3.79	4.94	109,367	123,182	313,549
1987-88	33,195	35,505	68,700	6.84	4.16	5.43	226,968	143,484	370,452
1988-89	34,627	34,873	69,500	6.05	2.84	4.41	210,151	95,493	305,644
1989-90	22,614	26,686	49,300	10.00	2.53	5.86	227,152	63,998	291,150
1990-91	30,815	24,685	55,500	8.64	1.62	5.48	264,619	37,086	301,705
1991-92	31,349	23,916	55,265	8.24	3.51	6.16	255,032	79,612	334,644
FLORIDA GRAPEFRUIT									
1986-87	20,938	28,862	49,800	5.89	4.32	4.98	123,342	124,778	248,120
1987-88	23,110	30,740	53,850	6.85	4.61	5.57	158,213	141,674	299,887
1988-89	23,902	30,848	54,750	6.03	3.24	4.45	144,068	99,806	243,874
1989-90	13,344	22,356	35,700	10.00	3.06	5.65	133,413	68,343	201,756
1990-91	23,923	21,177	45,100	8.83	2.08	5.66	211,244	44,084	255,328
1991-92	22,844	19,556	42,400	8.69	4.25	6.64	198,419	83,081	281,500
CALIFORNIA GRAPEFRUIT									
1986-87	5,850	3,450	9,300	7.71	-0.64	4.62	45,039	-2,208	42,831
1987-88	6,000	3,100	9,100	7.43	-0.41	4.76	44,392	-1,274	43,118
1988-89	5,500	2,500	8,000	7.33	-1.54	4.55	40,045	-3,866	36,179
1989-90	6,000	3,400	9,400	10.49	-1.13	6.28	63,060	-3,865	59,195
1990-91	5,200	2,800	8,000	7.86	-1.99	4.40	40,770	-5,582	35,188
1991-92	6,400	3,600	10,000	6.85	-0.75	4.10	43,800	-2,709	41,091
TEXAS GRAPEFRUIT									
1986-87	1,555	370	1,925	7.47	3.40	6.69	11,616	1,258	12,874
1987-88	2,785	1,015	3,800	6.61	3.32	5.73	18,409	3,370	21,779
1988-89	3,890	910	4,800	5.06	0.57	4.21	19,683	519	20,202
1989-90	1,605	395	2,000	7.34	0.56	6.00	11,781	221	12,002
1990-91	--	--	--	--	--	--	--	--	--
1991-92	65	--	65	13.52	--	13.52	879	--	879
ARIZONA GRAPEFRUIT									
1986-87	1,740	1,010	2,750	5.96	-0.64	3.54	10,370	-646	9,724
1987-88	1,300	650	1,950	4.58	-0.44	2.91	5,954	-286	5,668
1988-89	1,335	615	1,950	4.76	-1.57	2.76	6,355	-966	5,389
1989-90	1,665	535	2,200	11.35	-1.31	8.27	18,898	-701	18,197
1990-91	1,692	708	2,400	7.45	-2.00	4.66	12,605	-1,416	11,189
1991-92	2,040	760	2,800	5.85	-1.00	3.99	11,934	-760	11,174

1/ 1991-92 preliminary.

CITRUS FRUITS: Utilization, season average on-tree price, and value by types, by states, crop years 1987-88 through 1991-92 1/

Crop year	Utilization of production			Price per box			Value of production		
	Fresh	Proc	Total	Fresh	Proc	Total	Fresh	Proc	Total
	1,000 boxes			Dollars per box			1,000 dollars		
FLORIDA ALL TANGERINES									
1987-88	1,614	836	2,450	17.65	4.00	12.99	28,487	3,344	31,831
1988-89	1,639	1,261	2,900	19.10	4.24	12.64	31,305	5,347	36,652
1989-90	999	701	1,700	24.40	2.29	15.28	24,376	1,605	25,981
1990-91	1,227	723	1,950	25.30	3.19	17.10	31,043	2,306	33,349
1991-92	1,966	634	2,600	22.60	4.04	18.07	44,432	2,561	46,993
FLORIDA EARLY TANGERINES 2/									
1987-88	278	82	360	24.05	2.10	19.05	6,686	172	6,858
1988-89	320	130	450	22.10	1.96	16.28	7,072	255	7,327
1989-90	445	135	580	25.10	1.03	19.50	11,170	139	11,309
1990-91	380	200	580	25.60	1.82	17.40	9,728	364	10,092
1991-92	558	142	700	28.80	2.71	23.51	16,070	385	16,455
FLORIDA DANCY TANGERINES									
1987-88	550	390	940	15.95	2.14	10.22	8,773	835	9,608
1988-89	528	422	950	17.80	2.06	10.81	9,398	869	10,267
1989-90	347	133	480	17.80	1.45	13.27	6,177	193	6,370
1990-91	149	121	270	21.00	1.72	12.36	3,129	208	3,337
1991-92	442	188	630	16.80	3.18	12.74	7,426	598	8,024
FLORIDA HONEY TANGERINES									
1987-88	786	364	1,150	16.65	6.42	13.41	13,087	2,337	15,424
1988-89	791	709	1,500	18.80	5.96	12.73	14,871	4,226	19,097
1989-90	207	433	640	34.10	2.94	13.02	7,059	1,273	8,332
1990-91	698	402	1,100	26.00	4.31	18.07	18,148	1,733	19,881
1991-92	966	304	1,270	21.70	5.18	17.75	20,962	1,575	22,537
CALIFORNIA TANGERINES									
1987-88	1,524	566	2,090	18.92	-0.38	13.69	28,834	-215	28,619
1988-89	1,475	565	2,040	16.86	0.34	12.28	24,869	192	25,061
1989-90	1,240	410	1,650	22.28	0.85	16.95	27,627	348	27,975
1990-91	925	425	1,350	23.68	-1.78	15.67	21,904	-756	21,148
1991-92	1,680	720	2,400	18.64	-0.89	12.78	31,315	-641	30,674
ARIZONA TANGERINES									
1987-88	500	100	600	16.02	0.50	13.43	8,010	50	8,060
1988-89	520	130	650	16.96	-0.41	13.49	8,819	-53	8,766
1989-90	460	140	600	18.68	0.72	14.49	8,593	101	8,694
1990-91	497	103	600	20.18	-1.78	16.41	10,029	-183	9,846
1991-92	880	320	1,200	14.54	-0.99	10.40	12,795	-317	12,478

1/ 1991-92 preliminary. 2/ Robinson variety--1987-88 and 1988-89, Robinson and Sunburst varieties beginning in 1989-90.

OTHER CITRUS, LIMES AND LEMONS: Utilization, season average on-tree price, and value by types, by states, crop years 1987-88 through 1991-92 1/

Crop year	Utilization of production			Price per box			Value of production		
	Fresh	Proc	Total	Fresh	Proc	Total	Fresh	Proc	Total
	1,000 boxes			Dollars per box			1,000 dollars		
FLORIDA TANGELOS									
1987-88	1,395	2,805	4,200	7.65	4.55	5.58	10,672	12,763	23,435
1988-89	1,348	2,452	3,800	8.25	5.25	6.31	11,121	12,873	23,994
1989-90	1,118	1,832	2,950	8.05	3.30	5.10	9,000	6,046	15,046
1990-91	1,186	1,464	2,650	9.70	3.21	6.11	11,504	4,699	16,203
1991-92	1,307	1,293	2,600	9.20	4.90	7.06	12,024	6,336	18,360
FLORIDA K-EARLY CITRUS									
1987-88	184	56	240	10.45	1.60	8.39	1,923	90	2,013
1988-89	251	69	320	7.05	0.94	5.73	1,770	65	1,835
1989-90	140	70	210	8.15	0.54	5.61	1,141	38	1,179
1990-91	111	49	160	7.40	-0.45	4.99	821	-22	799
1991-92	113	52	165	4.30	0.05	2.96	486	3	489
FLORIDA LIMES									
1987-88	860	440	1,300	20.12	-1.84	12.69	17,303	-810	16,493
1988-89	950	300	1,250	15.24	-1.22	11.29	14,478	-366	14,112
1989-90	1,010	640	1,650	14.83	-2.10	8.26	14,978	-1,344	13,634
1990-91	930	520	1,450	22.52	-1.26	13.99	20,944	-655	20,289
1991-92	1,070	530	1,600	14.08	-0.90	9.12	15,066	-477	14,589
CALIFORNIA LEMONS									
1987-88	10,100	6,900	17,000	13.44	-2.04	7.16	135,744	-14,076	121,668
1988-89	10,300	5,900	16,200	15.37	-1.11	9.37	158,311	-6,549	151,762
1989-90	10,500	5,300	15,800	18.23	0.16	12.17	191,415	848	192,263
1990-91	9,390	5,410	14,800	20.91	-0.83	12.96	196,345	-4,490	191,855
1991-92	9,100	6,000	15,100	15.67	-1.30	8.93	142,597	-7,800	134,797
ARIZONA LEMONS									
1987-88	1,965	1,685	3,650	12.24	-2.04	5.65	24,052	-3,437	20,615
1988-89	1,980	1,820	3,800	12.67	-1.15	6.05	25,087	-2,093	22,994
1989-90	1,764	1,036	2,800	17.93	-0.23	11.21	31,629	-238	31,391
1990-91	2,410	1,690	4,100	14.31	-0.68	8.13	34,487	-1,149	33,338
1991-92	2,980	2,120	5,100	17.77	-1.82	9.63	52,955	-3,858	49,097

1/ 1991-92 preliminary.

FLORIDA LEMONS: Bearing acreage, production, and season average on-tree prices for crop years 1987 through 1991

Crop year 1/	True lemons		Meyer lemons		All lemons			
	Bearing acres	Production	Bearing acres	Production	Bearing acres	Production	Price per box	Value of production
	1,000 acres	1,000 boxes	1,000 acres	1,000 boxes	1,000 acres	1,000 boxes	Dollars	1,000 dollars
1987	1.2	470	0.1	40	1.3	510	5.00	2,561
1988	1.1	433	0.1	47	1.2	480	5.30	2,548
1989	1.0	333	0.1	42	1.1	375	6.90	2,592
1990	0.9	210	0.1	40	1.0	250	6.80	1,697
1991	0.8	254	0.1	46	0.9	300	12.60	3,784

1/ Crop year corresponds to calendar year.

**FLORIDA GRAPEFRUIT: Production by types, by areas of production,
crop years 1982-83 through 1991-92**

Crop year	White seedless			Colored seedless			Seedy		
	State	Interior	Indian River	State	Interior	Indian River	State	Interior	Indian River
1,000 boxes									
1982-83	21,800	11,800	10,000	12,800	5,000	7,800	4,800	4,700	100
1983-84	23,000	10,200	12,800	13,400	4,300	9,100	4,500	4,400	100
1984-85	24,800	8,600	16,200	16,300	4,200	12,100	2,900	2,800	100
1985-86	25,600	10,700	14,900	18,000	5,500	12,500	3,150	2,950	200
1986-87	26,900	10,300	16,600	20,000	5,100	14,900	2,900	2,800	100
1987-88	29,200	11,700	17,500	21,900	6,200	15,700	2,750	2,650	100
1988-89	27,700	11,400	16,300	23,700	6,700	17,000	3,350	3,250	100
1989-90	18,000	5,000	13,000	16,300	3,300	13,000	1,400	1,300	100
1990-91	21,700	6,700	15,000	21,800	5,100	16,700	1,600	1,500	100
1991-92	19,100	7,200	11,900	22,100	5,800	16,300	1,200	1,100	100

**FLORIDA GRAPEFRUIT: Season average on-tree prices per box, by utilization
of sales and areas of production, by types, crop years
1986-87 through 1991-92 1/**

Crop year and area	White seedless			Colored seedless		
	Fresh	Processing	All sales	Fresh	Processing	All sales
Dollars						
1986-87						
Interior	5.20	4.37	4.53	6.40	3.74	6.13
Indian River	4.50	4.35	4.40	6.50	4.28	5.66
State average	4.70	4.36	4.45	6.50	4.23	5.80
1987-88						
Interior	5.60	4.81	4.94	6.50	4.01	5.94
Indian River	7.20	4.79	5.63	7.00	3.81	5.90
State average	6.82	4.80	5.35	6.86	3.86	5.93
1988-89						
Interior	4.30	3.58	3.69	5.30	2.27	4.66
Indian River	6.70	3.55	4.76	6.20	2.23	4.70
State average	6.22	3.56	4.33	5.93	2.23	4.71
1989-90						
Interior	6.60	3.70	4.20	9.20	1.66	8.09
Indian River	12.00	3.49	5.58	9.80	1.94	5.85
State average	10.91	3.55	5.21	9.60	1.92	6.30
1990-91						
Interior	6.20	2.17	3.19	9.30	1.37	8.43
Indian River	9.10	2.16	5.08	8.80	1.42	6.41
State average	8.60	2.16	4.59	8.95	1.42	6.85
1991-92						
Interior	7.10	4.63	4.95	7.80	3.07	6.73
Indian River	10.70	4.73	7.65	8.20	3.30	6.79
State average	10.20	4.68	6.63	8.05	3.25	6.74

1/ 1991-92 preliminary.

**FLORIDA CITRUS PRODUCTS: Annual packs of citrus and all citrus feeds,
crop years 1977-78 through 1991-92**

Crop year	Oranges							All citrus	
	Concentrated juice 1/		Chilled juice		Canned juice		Canned sections	Feed	Molasses
	Product	Boxes used	Product	Boxes used	Product	Boxes used	Product		
	1,000 gallons	1,000 boxes	1,000 gallons	1,000 boxes	1,000 cases 2/	1,000 boxes	1,000 cases 2/	1,000 tons	
1977-78	162,204	130,929	134,369	25,379	11,654	7,210	16	897	24
1978-79	172,985	129,123	124,953	22,793	13,222	6,511	15	886	20
1979-80	231,210	173,229	134,782	25,430	13,869	6,656	18	1,091	36
1980-81	174,537	144,322	95,700	19,640	13,012	5,994	19	988	35
1981-82	133,294	104,355	84,597	16,293	11,503	4,058	14	724	23
1982-83	169,577	114,343	104,256	18,084	9,802	2,190	35	710	26
1983-84	121,216	94,016	92,814	16,981	9,084	2,269	NA	640	36
1984-85	118,472	86,112	81,445	14,903	7,425	1,185	NA	580	35
1985-86	132,406	96,061	NA	NA	7,596	1,361	NA	610	37
1986-87	145,056	96,182	NA	NA	8,122	947	NA	601	28
1987-88	169,973	110,206	NA	NA	7,256	904	NA	697	30
1988-89	174,717	113,729	NA	NA	8,164	1,141	NA	770	24
1989-90	90,285	73,640	NA	NA	6,640	660	NA	598	28
1990-91	151,396	104,136	NA	NA	7,130	569	NA	701	27
1991-92	145,421	93,931	NA	NA	7,471	456	NA	637	24

Crop year	Concentrated juice				Canned products				
	Grapefruit		Tangerines	Blended	Grapefruit		Tangerine juice	Blended juice	Citrus salad
	Product	Boxes used	Product	Product	Juice	Segments			
	1,000 gallons	1,000 boxes	1,000 gallons		1,000 cases 2/				
1977-78	13,693	13,999	1,672	1	17,246	1,753	8	1,664	111
1978-79	14,243	13,274	1,367	3	16,764	1,823	19	1,255	76
1979-80	19,443	18,506	2,142	1	16,604	1,966	17	1,314	74
1980-81	20,763	19,490	1,175	3	14,231	1,671	9	984	79
1981-82	21,869	20,052	924	18	15,725	1,344	6	727	69
1982-83	14,483	13,977	334	1	11,651	1,235	4	650	94
1983-84	19,291	18,728	636	0	9,513	NA	0	555	NA
1984-85	24,802	22,996	285	0	10,552	NA	1	615	NA
1985-86	24,162	21,572	368	0	9,948	NA	0	577	NA
1986-87	28,875	24,143	373	0	8,982	NA	0	533	NA
1987-88	31,906	26,690	583	0	7,724	NA	0	449	NA
1988-89	32,466	26,621	495	10	7,956	NA	0	434	NA
1989-90	21,774	19,405	371	0	5,986	NA	0	334	NA
1990-91	21,672	17,413	279	0	6,678	NA	0	450	NA
1991-92	19,458	16,099	297	5	5,768	NA	0	303	NA

1/ 45.0 degrees Brix through 1979-80; 43.4 degrees Brix, 1980-81; 42.0 degrees Brix, 1981-82 and later seasons. 2/ Equiv. cases, 24 No. 2 cans.

SOURCE: See Page 45, Data Sources, Item 3

**FLORIDA CITRUS: Monthly and season average on-tree price per
box for crop years 1987-88 through 1991-92 1/**

Crop year	Oct	Nov	Dec	Jan	Feb	Mar	Season average
-----------	-----	-----	-----	-----	-----	-----	----------------

Dollars

EARLY (INCLUDING NAVELS) AND MIDSEASON ORANGES

ALL METHODS OF SALE

1987-88	--	7.53	6.33	6.46	6.87	8.35	6.72
1988-89	--	6.69	6.52	6.68	6.91	7.00	6.69
1989-90	--	6.79	6.21	5.82	5.68	--	6.01
1990-91	5.70	5.23	5.27	5.51	5.59	--	5.38
1991-92	8.23	4.90	5.09	5.74	6.23	--	5.49

SALES FOR FRESH USE

1987-88	--	8.15	7.55	6.85	7.65	8.35	7.65
1988-89	--	8.45	7.85	6.15	5.85	6.45	7.65
1989-90	--	8.95	8.95	13.95	13.45	--	9.55
1990-91	7.10	6.70	8.80	11.00	10.20	--	8.30
1991-92	11.60	9.40	8.70	6.90	7.60	--	9.40

SALES FOR PROCESSING

1987-88	--	6.60	6.15	6.45	6.85	8.35	6.64
1988-89	--	5.65	6.38	6.69	6.93	7.00	6.63
1989-90	--	5.60	5.90	5.70	5.50	--	5.74
1990-91	5.40	5.11	4.96	5.30	5.52	--	5.17
1991-92	3.30	3.99	4.80	5.70	6.20	--	5.09

Crop year	Jan	Feb	Mar	Apr	May	Jun	Season average
-----------	-----	-----	-----	-----	-----	-----	----------------

Dollars

LATE (VALENCIA) ORANGES

ALL METHODS OF SALE

1987-88	--	--	8.45	8.41	8.81	9.01	8.73
1988-89	--	--	7.07	7.94	8.83	9.27	8.41
1989-90	5.80	5.70	6.26	7.31	7.10	--	6.53
1990-91	--	6.37	6.45	6.63	6.76	--	6.58
1991-92	--	6.38	6.24	7.00	7.53	8.77	7.01

SALES FOR FRESH USE

1987-88	--	--	8.65	7.85	7.95	10.75	8.45
1988-89	--	--	6.05	6.75	8.35	12.95	7.55
1989-90	13.65	14.15	13.15	13.45	15.65	--	13.75
1990-91	--	8.60	8.40	8.40	9.10	--	8.60
1991-92	--	7.10	6.10	6.10	7.10	10.60	6.70

SALES FOR PROCESSING

1987-88	--	--	8.35	8.45	8.85	8.95	8.75
1988-89	--	--	7.25	7.99	8.85	9.15	8.45
1989-90	5.70	5.50	6.00	7.15	6.95	--	6.34
1990-91	--	5.53	6.27	6.48	6.50	--	6.35
1991-92	--	6.10	6.25	7.05	7.55	8.60	7.03

1/ 1991-92 preliminary.

**FLORIDA CITRUS: Monthly and season average on-tree price per box
for crop years 1987-88 through 1991-92 1/**

Crop year	Sep	Oct	Nov	Dec	Jan	Feb	Mar	Apr	May	Season average
-----------	-----	-----	-----	-----	-----	-----	-----	-----	-----	----------------

Dollars

WHITE SEEDLESS GRAPEFRUIT

ALL METHODS OF SALE

1987-88	--	7.62	5.33	5.10	5.23	5.40	5.14	5.40	5.66	5.35
1988-89	--	--	4.71	4.39	4.64	4.25	4.05	4.51	4.67	4.33
1989-90	--	7.39	7.13	5.76	4.30	4.63	5.61	6.04	--	5.21
1990-91	6.50	5.53	5.55	3.93	4.53	4.00	4.95	5.23	3.47	4.59
1991-92	--	5.97	6.04	5.50	6.24	6.52	7.63	8.23	--	6.63

SALES FOR FRESH USE

1987-88	--	8.59	5.99	6.07	5.89	7.16	6.78	6.70	7.26	6.82
1988-89	--	--	5.41	5.95	6.20	6.28	6.27	6.56	6.77	6.22
1989-90	--	10.42	10.87	8.94	11.42	12.33	10.98	9.77	--	10.91
1990-91	8.00	8.00	9.30	7.00	8.60	8.50	9.30	9.50	6.80	8.60
1991-92	--	8.70	8.90	9.00	9.60	10.90	11.60	11.40	--	10.20

SALES FOR PROCESSING

1987-88	--	4.05	4.20	4.55	4.90	4.90	4.85	4.75	4.35	4.80
1988-89	--	--	3.48	3.48	3.57	3.62	3.60	3.45	3.46	3.56
1989-90	--	2.15	2.35	3.40	3.35	3.55	4.05	4.50	--	3.55
1990-91	1.55	1.87	2.18	2.20	2.15	2.39	2.38	1.71	1.19	2.16
1991-92	--	0.25	3.15	3.80	4.65	5.05	5.40	5.55	--	4.68

Crop year	Sep	Oct	Nov	Dec	Jan	Feb	Mar	Apr	May	Season average
-----------	-----	-----	-----	-----	-----	-----	-----	-----	-----	----------------

Dollars

COLORED SEEDLESS GRAPEFRUIT

ALL METHODS OF SALE

1987-88	--	10.50	6.91	6.37	6.02	5.71	5.40	5.00	4.87	5.93
1988-89	--	7.78	5.88	4.76	4.43	4.01	3.89	4.42	4.71	4.71
1989-90	7.54	5.44	5.30	7.69	5.84	5.25	8.55	--	--	6.30
1990-91	8.21	7.94	6.79	6.12	6.99	6.37	6.92	6.83	6.36	6.85
1991-92	8.90	6.38	6.69	6.18	6.04	6.46	7.38	8.25	--	6.74

SALES FOR FRESH USE

1987-88	--	11.78	7.58	7.06	6.75	6.46	6.26	5.75	6.00	6.86
1988-89	--	10.14	7.07	5.67	5.22	4.94	5.06	5.61	6.13	5.93
1989-90	8.80	6.68	6.53	10.30	10.81	12.09	15.97	--	--	9.60
1990-91	9.35	9.25	8.15	7.55	9.35	8.95	10.25	9.75	8.45	8.95
1991-92	10.15	7.65	7.85	7.45	7.25	7.85	8.85	9.55	--	8.05

SALES FOR PROCESSING

1987-88	--	3.55	3.60	4.00	4.25	4.35	4.15	3.65	2.70	3.86
1988-89	--	1.22	2.39	2.75	2.71	2.28	2.05	2.11	1.99	2.23
1989-90	0.80	1.20	1.60	1.45	1.50	1.95	3.30	--	--	1.92
1990-91	1.10	1.14	1.41	1.61	1.42	1.40	1.43	1.24	1.78	1.42
1991-92	-0.40	-0.40	1.70	1.90	3.35	4.30	4.40	4.70	--	3.25

1/ 1991-92 preliminary.

**FLORIDA CITRUS: Monthly and season average on-tree price per box for
crop years 1987-88 through 1991-92 1/**

Crop year	Apr	May	Jun	Jul	Aug	Sep	
LIMES							Dollars
ALL METHODS OF SALE							
1987-88	28.42	28.71	16.85	2.70	0.83	4.47	
1988-89	29.80	6.80	-0.20	1.30	2.84	4.87	
1989-90	8.80	5.80	0.80	0.29	1.15	4.33	
1990-91	41.50	28.50	3.01	1.47	8.54	9.20	
1991-92	39.50	6.76	-0.24	1.49	6.40	12.57	
SALES FOR FRESH USE							
1987-88	33.90	37.90	21.90	4.90	3.90	7.90	
1988-89	29.80	6.80	-0.20	1.40	4.90	13.90	
1989-90	8.80	5.80	0.80	0.90	5.90	17.90	
1990-91	41.50	28.50	4.40	2.40	16.90	19.90	
1991-92	39.50	7.90	-0.10	3.90	10.90	16.90	
SALES FOR PROCESSING							
1987-88	-2.15	-2.15	-2.15	-2.15	-1.40	-1.05	
1988-89	--	--	--	-1.20	-1.20	-1.22	
1989-90	--	--	--	-0.95	-2.00	-2.05	
1990-91	--	--	0.55	-0.40	-0.90	-0.90	
1991-92	--	-2.60	-0.40	-0.40	-0.40	-2.60	
Crop year	Oct	Nov	Dec	Jan	Feb	Mar	Season average
LIMES							Dollars
ALL METHODS OF SALE							
1987-88	3.65	11.78	34.80	43.80	41.80	39.80	12.69
1988-89	5.24	16.59	41.80	47.80	44.80	32.80	11.29
1989-90	6.24	5.69	28.80	40.80	68.80	49.80	8.26
1990-91	12.55	11.53	20.35	21.05	31.69	40.69	13.99
1991-92	14.23	14.65	18.84	17.92	25.35	23.50	9.12
SALES FOR FRESH USE							
1987-88	10.90	17.90	34.80	43.80	41.80	39.80	20.12
1988-89	14.90	18.90	41.80	47.80	44.80	32.80	15.24
1989-90	20.90	14.90	28.80	40.80	68.80	49.80	14.83
1990-91	23.90	24.90	32.90	32.90	44.90	55.90	22.52
1991-92	18.90	17.90	23.90	21.90	33.90	23.50	14.08
SALES FOR PROCESSING							
1987-88	-2.40	-3.00	--	--	--	--	-1.84
1988-89	-1.23	-1.20	--	--	--	--	-1.22
1989-90	-2.65	-2.65	--	--	--	--	-2.10
1990-91	-2.65	-2.65	-2.65	-2.65	-2.65	-2.65	-1.26
1991-92	-2.60	-2.60	-2.60	-2.60	-2.60	--	-0.90

1/ 1991-92 preliminary.

**FLORIDA CITRUS: Monthly and season average on-tree price per
box for crop years 1987-88 through 1991-92 1/**

Crop year	Oct	Nov	Dec	Jan	Feb	Season average
TANGELOS						
Dollars						
ALL METHODS OF SALE						
1987-88	--	6.82	5.47	5.42	4.92	5.58
1988-89	--	6.58	6.36	6.36	5.33	6.31
1989-90	--	6.54	5.07	4.24	4.94	5.10
1990-91	6.33	5.87	6.37	6.15	4.87	6.11
1991-92	7.79	7.78	6.88	6.37	--	7.06
SALES FOR FRESH USE						
1987-88	--	9.15	6.65	8.15	9.15	7.65
1988-89	--	8.25	7.25	11.15	10.65	8.25
1989-90	--	8.75	6.65	14.95	16.95	8.05
1990-91	10.50	8.70	9.50	11.50	10.00	9.70
1991-92	11.70	9.40	8.50	10.10	--	9.20
SALES FOR PROCESSING						
1987-88	--	3.50	4.50	4.80	4.45	4.55
1988-89	--	4.69	5.58	5.26	4.88	5.25
1989-90	--	2.75	3.69	2.82	4.64	3.30
1990-91	2.80	3.05	3.25	3.30	3.60	3.21
1991-92	2.95	4.75	5.05	5.05	--	4.90

Crop year	Sep	Oct	Nov	Season average	Dec	Jan	Feb	Mar	Apr	Season average
Dollars					Dollars					
K-EARLY CITRUS FRUIT					TEMPLES					
ALL METHODS OF SALE					ALL METHODS OF SALE					
1987-88	--	8.84	5.63	8.39	--	6.58	5.31	5.59	--	5.69
1988-89	--	5.85	5.33	5.73	--	6.70	5.09	5.15	5.28	5.46
1989-90	--	6.55	2.32	5.61	--	4.38	6.81	4.65	4.94	5.64
1990-91	5.79	3.89	4.79	4.99	8.64	8.75	5.32	5.70	--	6.31
1991-92	4.39	3.27	0.29	2.96	--	6.67	6.31	7.58	--	6.55
SALES FOR FRESH USE					SALES FOR FRESH USE					
1987-88	--	10.75	8.15	10.45	--	7.45	6.15	8.45	--	7.05
1988-89	--	7.15	6.65	7.05	--	7.95	5.65	7.45	7.45	7.15
1989-90	--	8.95	3.95	8.15	--	17.15	18.15	13.45	--	17.75
1990-91	8.00	6.50	6.50	7.40	13.30	12.60	8.10	10.10	--	10.60
1991-92	5.50	4.10	1.00	4.30	--	8.30	8.20	11.40	--	8.50
SALES FOR PROCESSING					SALES FOR PROCESSING					
1987-88	--	1.55	1.75	1.60	--	4.40	4.90	5.05	--	4.91
1988-89	--	0.90	1.01	0.94	--	4.55	4.93	5.01	5.26	4.95
1989-90	--	0.43	0.75	0.54	--	3.23	4.94	4.46	4.94	4.30
1990-91	-0.55	-0.35	-0.35	-0.45	3.05	3.45	4.40	4.65	--	4.32
1991-92	-0.05	-0.05	0.15	0.05	--	4.65	5.65	5.95	--	5.44

1/ 1991-92 preliminary.

**FLORIDA CITRUS: Monthly and season average on-tree price per box
for crop years 1987-88 through 1991-92 1/**

Crop year	Sep	Oct	Nov	Dec	Jan	Season average	Oct	Nov	Dec	Jan	Feb	Season average
Dollars							Dollars					
EARLY TANGERINES 2/							DANCY TANGERINES					
ALL METHODS OF SALE							ALL METHODS OF SALE					
1987-88	--	17.60	16.70	11.30	--	16.48	--	15.90	11.10	7.68	1.51	10.00
1988-89	--	18.51	15.51	13.97	--	16.28	--	15.16	12.94	6.35	3.39	10.81
1989-90	--	22.88	19.29	15.73	--	19.50	--	16.91	12.91	--	--	13.27
1990-91	20.40	19.03	16.43	8.61	7.60	17.40	16.58	12.61	11.06	10.24	16.38	12.36
1991-92	27.29	23.17	24.43	20.07	3.00	23.51	--	20.03	13.36	8.25	--	12.74
SALES FOR FRESH USE							SALES FOR FRESH USE					
1987-88	--	24.75	23.75	21.75	--	24.05	--	24.55	16.25	12.75	11.75	15.95
1988-89	--	25.00	21.00	19.50	--	22.10	--	21.00	19.00	13.00	13.00	17.80
1989-90	--	29.40	24.40	21.40	--	25.10	--	21.40	17.40	--	--	17.80
1990-91	29.10	25.70	24.70	21.10	21.10	25.60	22.10	20.40	22.20	21.10	21.10	21.00
1991-92	29.10	29.70	28.60	26.10	--	28.80	--	23.10	17.10	12.10	--	16.80
SALES FOR PROCESSING							SALES FOR PROCESSING					
1987-88	--	1.65	2.32	2.58	--	2.10	--	1.85	2.04	2.25	2.25	2.14
1988-89	--	1.40	2.15	2.35	--	1.96	--	2.50	2.15	1.92	1.97	2.06
1989-90	--	0.65	0.92	1.66	--	1.03	--	0.93	1.49	--	--	1.45
1990-91	0.50	1.81	2.08	2.10	2.20	1.82	0.00	1.60	2.00	2.10	2.20	1.72
1991-92	2.00	2.00	3.00	4.00	3.00	2.71	--	3.00	3.00	3.50	--	3.18

Crop year	Dec	Jan	Feb	Mar	Apr	Season average
Dollars						
HONEY TANGERINES						
ALL METHODS OF SALE						
1987-88	--	13.49	12.82	12.44	15.59	13.41
1988-89	--	13.32	12.61	11.60	14.55	12.73
1989-90	2.70	12.95	18.89	9.55	--	13.02
1990-91	17.29	19.70	16.44	19.44	--	18.07
1991-92	28.63	18.81	15.13	19.71	--	17.75
SALES FOR FRESH USE						
1987-88	--	17.75	15.75	16.25	19.75	16.65
1988-89	--	22.50	18.50	16.00	20.00	18.80
1989-90	35.40	34.40	33.40	33.90	--	34.10
1990-91	35.60	27.10	22.10	26.10	--	26.00
1991-92	34.10	23.10	18.60	23.60	--	21.70
SALES FOR PROCESSING						
1987-88	--	4.85	6.65	6.75	7.65	6.42
1988-89	--	5.71	6.00	6.11	6.11	5.96
1989-90	1.28	2.76	4.13	4.14	--	2.94
1990-91	3.55	4.10	4.65	5.40	--	4.31
1991-92	4.00	4.10	5.00	7.10	--	5.18

1/ 1991-92 preliminary. 2/ Robinson variety through 1988-89, Robinson and Sunburst varieties beginning in 1989-90.

**FLORIDA CITRUS: Production by counties, areas
and types, 1991-92 season**

County and area	Round oranges			Grapefruit				Spe- cialty fruit	All citrus 1/
	Early and mid	Late (Valencia)	All	Seedless		Seedy	All		
				White	Colored				
1,000 boxes									
County:									
Brevard	1,163	761	1,924	211	382	12	605	62	2,591
Broward	16	48	64	--	15	--	15	3	82
Charlotte	1,638	1,329	2,967	106	161	8	275	94	3,336
Collier	2,818	2,421	5,239	105	634	29	768	179	6,186
DeSoto	8,974	5,337	14,311	138	100	110	348	431	15,090
Glades	1,628	534	2,162	23	75	--	98	29	2,289
Hardee	11,210	3,478	14,688	95	111	42	248	409	15,345
Hendry	9,209	7,395	16,604	1,441	1,981	56	3,478	756	20,838
Highlands	4,812	7,908	12,720	959	221	200	1,380	1,093	15,193
Hillsborough	5,804	1,604	7,408	117	129	57	303	395	8,106
Indian River	3,824	2,645	6,469	5,697	6,603	27	12,327	258	19,054
Lake	303	121	424	49	16	8	73	198	695
Lee	1,420	1,297	2,717	109	156	9	274	50	3,041
Manatee	3,595	1,357	4,952	165	222	188	575	129	5,856
Martin	5,320	5,734	11,054	1,696	558	9	2,263	327	13,644
Okeechobee	1,530	591	2,121	268	118	4	390	57	2,568
Orange	284	261	545	13	4	7	24	104	673
Osceola	2,102	978	3,080	206	175	12	393	236	3,709
Palm Beach	2,123	1,132	3,255	921	575	9	1,505	524	5,284
Pasco	231	101	332	18	4	1	23	30	385
Pinellas	11	22	33	3	1	8	12	9	54
Polk	9,365	7,335	16,700	1,525	984	351	2,860	1,404	20,964
St. Lucie	5,587	3,779	9,366	5,164	8,774	49	13,987	662	24,015
Sarasota	264	154	418	43	75	3	121	45	584
Seminole	47	28	75	--	--	--	--	22	97
Volusia	93	45	138	28	25	1	54	3	195
Other 2/	29	5	34	--	1	--	1	6	41
State total	83,400	56,400	139,800	19,100	22,100	1,200	42,400	7,715	189,915
Area:									
Indian River District	11,450	8,250	19,700	11,900	16,300	100	28,300	1,038	49,038
Northern	905	520	1,425	80	25	17	112	360	1,907
Central	16,058	16,177	32,235	2,657	1,362	553	4,572	2,710	39,517
Western	29,858	11,952	41,810	561	638	408	1,607	1,618	45,035
Southern	25,129	19,501	44,630	3,902	3,775	122	7,799	1,989	54,418
State total	83,400	56,400	139,800	19,100	22,100	1,200	42,400	7,715	189,915

1/ Excludes limes and lemons. 2/ Citrus, Hernando, Marion, and Putnam counties.

**FLORIDA CITRUS: Total acreage by counties and types
of fruit as of January 1, 1992**

County	Round oranges			Grapefruit				Specialty fruit 2/	All citrus
	Early and mid	Late (Valencia)	All 1/	Seedless		Seedy	All 1/		
				White	Colored				
Acres									
Brevard	4,605	3,555	8,502	662	1,413	46	2,130	452	11,084
Broward	90	195	285	1	58	3	62	18	365
Charlotte	5,894	6,166	12,257	420	2,175	33	2,629	1,095	15,981
Citrus	124	16	173	0	15	0	18	9	200
Collier	13,230	15,942	29,333	849	2,365	108	3,560	1,274	34,167
Dade	0	0	0	0	0	0	0	6,076	6,076
DeSoto	26,994	26,511	54,808	424	478	420	1,324	1,926	58,058
Glades	5,090	2,882	8,713	60	228	0	288	135	9,136
Hardee	34,088	13,938	49,292	282	559	187	1,030	2,308	52,630
Hendry	32,154	37,993	73,927	3,026	5,756	202	9,221	4,248	87,396
Hernando	749	15	968	1	22	0	24	43	1,035
Highlands	18,791	34,335	54,481	1,869	831	894	3,637	4,099	62,217
Hillsborough	16,745	5,852	24,893	319	404	248	1,013	1,214	27,120
Indian River	14,904	13,747	29,444	16,491	16,595	97	34,086	1,916	65,446
Lake	8,424	1,630	14,837	78	578	59	1,009	2,758	18,604
Lee	4,020	4,859	9,122	239	374	37	684	753	10,559
Manatee	11,694	6,291	18,000	461	744	724	1,929	990	20,919
Marion	624	21	738	0	21	0	23	156	917
Martin	15,057	23,600	39,477	3,893	1,379	42	5,371	1,487	46,335
Okeechobee	5,327	2,756	8,655	628	297	18	1,401	383	10,439
Orange	4,907	2,160	8,213	31	153	41	282	975	9,470
Osceola	8,432	4,120	13,053	832	685	49	1,590	982	15,625
Palm Beach	5,340	3,937	9,405	1,560	1,500	20	3,098	2,284	14,787
Pasco	7,540	1,550	10,177	72	159	18	264	387	10,828
Pinellas	49	75	124	16	8	34	58	26	208
Polk	34,412	29,517	77,519	3,390	2,749	1,701	8,680	5,700	91,899
Putnam	59	0	59	0	0	0	0	16	75
St. Lucie	19,950	26,248	48,633	18,291	30,248	191	51,156	5,328	105,117
Sarasota	763	690	1,454	141	270	10	421	190	2,065
Seminole	766	204	1,034	0	5	1	9	163	1,206
Sumter	0	0	0	0	0	0	0	0	0
Volusia	766	269	1,060	72	82	4	169	97	1,326
State total	301,588	269,074	608,636	54,108	70,151	5,187	135,166	47,488	791,290

1/ Includes unidentified variety acreage. 2/ Includes limes and lemons surveyed as of November 1990.

**FLORIDA CITRUS: Total trees by counties and types
of fruit as of January 1, 1992**

County	Round oranges			Grapefruit				Specialty fruit 2/	All citrus
	Early and mid	Late (Valencia)	All 1/	Seedless		Seedy	All 1/		
				White	Colored				
1,000 trees									
Brevard	477.1	412.6	949.7	55.8	111.2	3.6	171.5	38.2	1,159.4
Broward	6.3	14.7	21.0	0.1	3.6	0.1	3.8	1.1	25.9
Charlotte	683.5	756.5	1,476.3	43.5	249.3	2.8	295.7	167.7	1,939.7
Citrus	11.9	2.1	16.6	0.0	1.9	0.0	2.1	1.0	19.7
Collier	1,883.4	2,342.7	4,257.9	96.7	287.9	11.3	434.3	177.7	4,869.9
Dade	0.0	0.0	0.0	0.0	0.0	0.0	0.0	963.1	963.1
DeSoto	3,344.8	3,267.6	6,825.3	36.2	53.1	41.0	130.6	250.2	7,206.1
Glades	644.4	405.6	1,195.9	6.8	35.8	0.0	42.6	27.3	1,265.8
Hardee	3,531.3	1,350.4	5,039.7	27.2	64.8	14.2	106.4	299.8	5,445.9
Hendry	4,728.8	5,685.3	11,021.5	354.6	752.1	21.4	1,160.3	615.4	12,797.2
Hernando	83.6	2.0	114.7	0.1	2.6	0.0	2.8	5.4	122.9
Highlands	2,333.9	3,969.8	6,516.0	161.0	79.3	69.9	314.9	464.5	7,295.4
Hillsborough	1,535.1	542.7	2,345.0	26.2	35.0	19.5	85.4	151.8	2,582.2
Indian River	1,550.9	1,406.8	3,071.3	1,384.9	1,595.5	8.5	3,095.1	210.6	6,377.0
Lake	1,073.3	204.5	1,888.2	10.3	75.6	6.0	123.3	387.0	2,398.5
Lee	495.9	658.6	1,197.9	21.1	46.4	3.2	77.4	88.8	1,364.1
Manatee	1,256.0	709.1	1,966.9	38.5	69.6	63.7	171.8	109.5	2,248.2
Marion	75.7	3.1	89.9	0.0	1.8	0.0	2.0	21.2	113.1
Martin	1,836.9	2,977.5	4,935.7	365.9	128.0	3.7	503.5	183.0	5,622.2
Okeechobee	585.1	262.5	931.3	50.5	26.6	1.3	126.8	40.9	1,099.0
Orange	558.9	203.3	910.8	2.6	14.7	3.4	27.1	111.6	1,049.5
Osceola	868.2	417.0	1,344.4	81.3	64.7	3.9	151.9	107.5	1,603.8
Palm Beach	656.7	479.4	1,156.4	159.8	149.3	2.2	313.0	246.3	1,715.7
Pasco	952.3	224.0	1,312.3	6.7	16.2	1.6	26.2	44.4	1,382.9
Pinellas	4.1	5.9	10.0	1.2	0.7	2.7	4.6	2.3	16.9
Polk	3,597.8	2,886.9	8,137.9	261.0	232.8	124.0	692.1	681.1	9,511.1
Putnam	8.7	0.0	8.7	0.0	0.0	0.0	0.0	2.9	11.6
St. Lucie	2,236.6	3,177.7	5,740.2	1,643.7	3,045.1	14.0	4,992.1	632.5	11,364.8
Sarasota	76.8	70.3	147.2	13.3	30.8	0.9	45.0	19.9	212.1
Seminole	72.2	19.1	98.5	0.0	0.7	0.1	1.1	10.7	110.3
Sumter	0.0	0.0	0.0	0.0	0.0	0.0	0.0	0.0	0.0
Volusia	76.1	20.5	99.1	5.8	8.7	0.3	15.8	6.8	121.7
State total	35,246.3	34,478.2	72,826.3	4,854.8	7,183.8	423.3	13,119.2	6,070.2	92,015.7

1/ Includes unidentified variety acreage. 2/ Includes limes and lemons surveyed as of November 1990.

OTHER STATES' CITRUS: Acreage by states, types, and age groups

ARIZONA 1/

Type	Central	Western	Total
Acres			
Valencia	2,200	3,500	5,700
Navel and sweets	3,910	290	4,200
White grapefruit	1,700	250	1,950
Red blush grapefruit	2,000	2,250	4,250
Lemons	1,400	14,000	15,400
Tangerine types	2,000	1,700	3,700
Total	13,210	21,990	35,200

CALIFORNIA 2/

Year set	Navel and other oranges	Valencia oranges	White grapefruit	Red grapefruit	Lemons	Limes	Tangelos and Tangors	Tangerines	All citrus
Acres									
Pre-1980	99,402	62,101	4,579	11,733	43,415	809	4,064	2,367	228,470
1980	774	765	5	180	464	62	131	87	2,468
1981	589	460	21	240	904	40	39	155	2,448
1982	771	459	90	584	671	38	49	251	2,913
1983	887	1,178	34	159	269	9	11	105	2,652
1984	1,475	1,355	18	259	158	3	55	85	3,408
1985	1,813	1,641	62	82	94	3	71	156	3,922
1986	3,141	1,433	41	289	264	3	75	121	5,367
1987	3,026	685	43	431	317	2	116	204	4,824
1988	2,856	1,246	101	617	139	0	25	261	5,245
1989	2,063	1,713	181	259	641	0	155	245	5,257
1990	2,423	1,504	116	128	124	0	20	68	4,383
1991	708	138	47	21	38	0	5	22	979
Total	119,928	74,678	5,338	14,982	47,498	969	4,816	4,127	272,336

TEXAS 3/

Age in years	Oranges			Grapefruit				Other 5/	All citrus
	Early and mids	Valencia	Total	Ruby Red	Redder varieties 4/	Other	Total		
Acres									
1 to 3	1,990	110	2,100	480	3,010	10	3,500	--	5,600
4 to 7	2,560	540	3,100	1,200	2,240	130	3,570	--	6,670
8 to 11	650	110	760	2,490	400	40	2,930	--	3,690
12+	4,460	3,580	8,040	9,060	910	430	10,400	--	18,440
Total	9,660	4,340	14,000	13,230	6,560	610	20,400	100	34,500

1/ 1990-91 harvested acres. 2/ Acreage as of 1991. 3/ Acreage as of January 1, 1989. 4/ Includes Star Ruby, Henderson/Ray and Rio Red. 5/ Includes lemons, limes, tangelos and tangerines.

SOURCES: See page 45, Data Sources, Item 4.

ORANGES AND TANGERINES: Orange receipts at 19 U.S. cities; tangerine receipts at 18 U.S. cities, September 1, 1991 through July 31, 1992, by source

City	Florida		California		Arizona		Texas		Others 1/		Total	
	Rail	Truck	Rail	Truck	Rail	Truck	Rail	Truck	Rail & boat	Truck	Rail & boat	Truck
ORANGES												
1,000 cartons												
U.S. cities:												
Atlanta	--	579	5	312	--	1	--	--	--	--	5	892
Baltimore-Washington	87	367	234	770	2	2	--	--	--	1	323	1,140
Boston	1	421	1,402	617	20	3	--	--	--	21	1,423	1,062
Buffalo	--	50	47	278	--	2	--	--	--	1	47	331
Chicago	1	842	1,352	2,037	61	3	--	--	--	5	1,414	2,887
Cincinnati	--	134	43	571	--	14	--	--	--	--	43	719
Columbia	--	93	--	40	--	--	--	--	--	--	--	133
Dallas	--	38	--	307	--	45	--	5	--	3	--	398
Denver	--	--	--	--	--	--	--	--	--	--	--	--
Detroit	--	150	--	723	--	3	--	--	--	2	--	878
Los Angeles	--	478	--	3,622	--	17	--	9	--	16	--	4,142
Miami	--	134	--	83	--	1	--	--	--	--	--	218
New Orleans	--	151	--	231	--	23	--	--	--	--	--	405
New York-Newark	911	528	2,485	901	86	--	--	--	--	2	3,482	1,431
Philadelphia	114	264	1,181	519	36	9	--	--	--	11	1,331	803
Pittsburgh	--	162	59	507	--	--	--	--	--	--	59	669
St. Louis	--	68	--	500	--	--	--	--	--	1	--	569
San Francisco-Oakland	--	622	--	1,871	--	4	--	5	--	15	--	2,517
Seattle-Tacoma	--	213	--	931	--	22	--	--	--	--	--	1,166
Total	1,114	5,294	6,808	14,820	205	149	--	19	--	78	8,127	20,360
Tangerines												
U.S. cities:												
Atlanta	--	70	--	15	--	1	--	--	--	2	--	88
Baltimore-Washington	12	120	--	4	--	--	--	--	--	4	12	128
Boston	--	163	8	9	--	1	--	--	--	1	8	174
Buffalo	--	17	--	12	--	--	--	--	--	--	--	29
Chicago	--	129	26	51	--	--	--	--	--	22	26	202
Cincinnati	--	37	--	8	--	--	--	--	--	5	--	50
Columbia	--	9	--	1	--	--	--	--	--	--	--	10
Dallas	--	--	--	15	--	2	--	--	--	4	--	21
Denver	--	--	--	--	--	--	--	--	--	--	--	--
Detroit	--	49	--	5	--	7	--	--	--	14	--	75
Los Angeles	--	136	--	540	--	50	--	--	--	7	--	733
Miami	--	13	--	2	--	1	--	--	--	2	--	18
New Orleans	--	30	--	38	--	25	--	--	--	2	--	95
New York-Newark	90	27	28	3	--	--	--	--	--	2	118	32
Philadelphia	5	55	12	4	--	--	--	--	--	5	17	64
Pittsburgh	--	30	--	--	--	--	--	--	--	1	--	31
St. Louis	--	15	--	--	--	--	--	--	--	8	--	23
San Francisco-Oakland	--	257	--	265	--	34	--	--	--	24	--	580
Seattle-Tacoma	--	32	--	77	--	--	--	--	--	--	--	109
Total	107	1,189	74	1,049	--	121	--	--	--	103	181	2,462

1/ Principal source of receipts of oranges at U.S. cities were Central America, Israel, South Africa, Mexico, and Australia. Principal source of receipts of tangerines at U.S. cities were Mexico and Spain.

SOURCE: See Page 45, Data Sources, Item 5.

GRAPEFRUIT, TANGELOS, AND TEMPLES: Grapefruit receipts at 19 U.S. cities; tangelo and Temple receipts
16 U.S. cities, September 1, 1991 through July 31, 1992, by source

City	Florida		California		Arizona		Texas		Others 1/		Total	
	Rail	Truck	Rail	Truck	Rail	Truck	Rail	Truck	Rail & boat	Truck	Rail & boat	Truck
1,000 cartons												
GRAPEFRUIT												
U.S. cities:												
Atlanta	--	230	--	89	--	9	--	--	--	1	--	329
Baltimore-Washington	116	513	31	106	5	16	--	--	--	6	152	641
Boston	8	753	69	89	41	12	--	--	--	12	118	866
Buffalo	--	126	--	31	--	3	--	--	--	--	--	161
Chicago	1	822	--	200	53	10	--	1	--	4	54	1,037
Cincinnati	--	245	--	109	--	31	--	--	--	--	--	386
Columbia	--	21	--	6	--	--	--	--	--	--	--	27
Dallas	--	46	--	79	--	32	--	2	--	1	--	160
Denver	--	--	--	--	--	--	--	--	--	--	--	--
Detroit	--	363	--	115	--	2	--	--	--	3	--	483
Los Angeles	--	494	--	1,049	--	83	--	--	1	2	1	1,628
Miami	--	84	--	23	--	3	--	--	--	--	--	110
New Orleans	--	62	--	46	--	16	--	--	--	--	--	124
New York-Newark	862	452	165	84	74	158	--	--	--	3	1,101	697
Philadelphia	247	261	58	53	33	29	--	--	--	1	338	344
Pittsburgh	--	267	--	61	--	3	--	--	--	--	--	331
St. Louis	--	247	--	61	--	3	--	--	--	1	--	299
San Francisco-Oakland	--	352	--	519	--	3	--	6	--	--	--	880
Seattle-Tacoma	--	241	--	257	--	13	--	--	--	3	--	514
Total	1,234	5,579	323	2,965	206	427	--	9	1	37	1,764	9,017

City	TANGELOS - Truck					TEMPLES - Truck		
	Florida	Arizona & California	Texas	Mexico	Total	Florida	Other	Total
1,000 cartons								
U.S. cities:								
Atlanta	6	6	--	--	12	12	--	12
Baltimore-Washington	45	11	--	--	56	59	--	59
Boston	27	23	--	--	50	36	--	36
Buffalo	8	2	--	--	10	8	--	8
Chicago	25	32	--	--	57	20	--	20
Cincinnati	29	24	--	--	53	17	--	17
Columbia	4	2	--	--	6	--	--	--
Dallas	--	9	--	--	9	--	--	--
Denver	--	--	--	--	--	--	--	--
Detroit	29	4	--	--	33	24	--	24
Los Angeles	--	151	--	--	151	--	--	--
Miami	3	5	--	--	8	--	--	--
New Orleans	7	5	--	--	12	--	--	--
New York-Newark	12	3	--	--	15	--	--	--
Philadelphia	23	11	--	--	34	15	--	15
Pittsburgh	34	7	--	--	41	14	--	14
St. Louis	17	3	--	--	21	6	--	6
San Francisco-Oakland	17	66	--	--	83	--	--	--
Seattle-Tacoma	4	12	--	--	16	--	--	--
Total	290	376	--	--	667	211	--	211

1/ Principal source of receipts of grapefruit at U.S. cities were Central America, Israel, South Africa, Mexico, and Australia.

SOURCE: See page 45, Data Sources, Item 5.

ORANGES: Total fresh shipments in U.S. and to Canada by states of origin and imports to U.S., monthly for crop years 1987-88 through 1991-92

Crop year	Sep	Oct	Nov	Dec	Jan	Feb	Mar	Apr	May	Jun	Jul	Aug	Total
FLORIDA													
1,000 cartons													
1987-88	7	516	2,490	4,677	1,881	1,620	1,666	1,983	1,953	791	142	15	17,741
1988-89	2	748	2,504	4,455	1,380	1,298	1,411	1,439	1,281	492	98	40	15,148
1989-90 1/	71	980	2,187	3,891	938	629	592	453	216	43	--	15	10,015
1990-91	493	1,184	2,709	3,885	2,122	2,237	694	3,213	2,486	487	66	3	19,579
1991-92	753	2,602	3,661	3,931	1,720	1,416	1,580	2,081	1,297	397	81	25	19,544
ARIZONA													
1987-88	--	14	355	403	198	31	171	583	395	45	1	--	2,196
1988-89	--	2	246	373	133	55	146	230	437	215	64	6	1,907
1989-90	--	6	164	259	118	30	261	243	338	262	5	--	1,686
1990-91	--	--	168	389	124	121	744	385	76	25	10	--	2,042
1991-92	--	--	201	368	261	217	155	265	630	391	95	39	2,622
CALIFORNIA 2/													
1987-88	4,142	4,223	4,712	7,520	8,774	7,557	8,927	10,130	5,767	3,467	3,241	3,226	71,686
1988-89	3,830	3,948	4,011	8,655	7,164	8,195	8,899	10,582	6,315	3,892	4,022	2,599	72,112
1989-90	3,890	3,385	5,254	7,749	7,042	7,181	8,560	7,446	6,733	5,368	3,103	2,717	68,428
1990-91	4,057	3,273	4,405	8,033	1,779	1,491	467	267	825	1,568	1,644	870	28,679
1991-92	1,389	846	2,519	5,817	4,855	7,673	8,465	7,619	7,006	3,801	3,682	3,978	57,650
TEXAS													
1987-88	--	85	279	514	389	566	281	57	6	--	2	--	2,179
1988-89	--	237	288	640	550	419	492	118	--	--	--	--	2,744
1989-90	--	157	363	662	6	--	--	--	--	--	--	--	1,188
1990-91	--	--	--	--	--	--	--	--	--	--	--	--	--
1991-92	--	--	--	29	--	--	--	--	--	--	--	--	29
MEXICO 3/													
1987-88	--	29	43	37	71	126	90	81	8	--	--	--	485
1988-89	--	41	11	4	12	9	15	11	--	--	--	--	103
1989-90	1	7	1	15	90	59	13	--	--	--	--	--	186
1990-91	--	--	--	13	69	157	286	423	271	96	--	--	1,315
1991-92	--	32	38	7	21	30	29	7	14	7	--	--	185
OTHER COUNTRIES 4/													
1987-88	5	4	186	157	31	92	43	82	76	--	--	1	677
1988-89	1	10	35	36	33	12	31	56	62	41	--	--	317
1989-90	3	1	8	10	7	12	132	68	40	4	36	26	347
1990-91	23	3	4	4	18	193	202	732	127	--	--	--	1,306
1991-92	26	4	10	270	7	15	29	18	29	42	--	--	450
TOTAL													
1987-88	4,154	4,871	8,065	13,308	11,344	9,992	11,178	12,916	8,205	4,303	3,386	3,242	94,964
1988-89	3,833	4,986	7,095	14,163	9,272	9,988	10,994	12,436	8,095	4,640	4,184	2,645	92,331
1989-90	3,965	4,536	7,977	12,586	8,201	7,911	9,558	8,210	7,327	5,677	3,144	2,758	81,850
1990-91	4,573	4,460	7,286	12,324	4,112	4,119	2,393	5,020	3,785	2,176	1,720	873	52,921
1991-92	2,168	3,484	6,429	10,422	6,864	9,351	10,258	9,990	8,976	4,638	3,858	4,042	80,480

1/ August shipments 1990-91 season. 2/ Includes small quantity tangelos and tangerines. 3/ See page 36 for footnote. 4/ Central America, Dominican Republic, Israel, Italy, Morocco, South Africa, Spain, and West Indies.

SOURCE: See Page 45, Data Sources, Item 5.

GRAPEFRUIT: Total fresh shipments in U.S. and to Canada by states of origin and imports to U.S., monthly for crop years 1987-88 through 1991-92

Crop year	Sep	Oct	Nov	Dec	Jan	Feb	Mar	Apr	May	Jun	Jul	Aug	Total
1,000 cartons													
FLORIDA													
1987-88	5	1,774	2,920	3,995	3,026	3,032	3,475	2,996	2,283	574	39	94	24,213
1988-89	47	1,709	2,815	3,694	2,671	3,007	3,318	2,841	1,948	635	31	2	22,718
1989-90 1/	578	2,620	2,521	3,345	2,012	1,964	1,342	398	21	2	--	40	14,843
1990-91	1,231	2,229	3,195	3,690	3,377	3,268	3,508	2,375	1,280	447	227	15	24,842
1991-92	1,437	2,717	3,252	4,057	3,414	3,171	3,271	1,741	234	5	--	--	23,299
ARIZONA 2/													
1987-88	--	--	--	--	3	--	--	8	20	61	2	--	94
1988-89	--	--	--	--	10	--	12	2	26	10	3	--	63
1989-90	--	--	--	9	1	1	6	15	34	--	1	--	67
1990-91	--	1	2	--	--	2	6	10	58	21	--	--	100
1991-92	--	--	--	--	--	--	1	39	91	77	17	--	225
CALIFORNIA 2/													
1987-88	96	10	--	--	--	2	3	8	8	80	196	110	513
1988-89	79	2	--	--	13	22	10	8	16	50	163	127	490
1989-90	22	--	2	4	22	22	13	13	57	91	79	70	395
1990-91	22	5	2	--	--	2	7	12	67	47	70	50	284
1991-92	33	16	--	--	--	--	1	13	54	56	105	66	344
TEXAS													
1987-88	--	113	579	898	1,036	1,066	874	397	88	4	--	--	5,055
1988-89	--	428	1,032	1,371	1,397	1,333	1,202	133	--	--	--	--	6,896
1989-90	--	812	1,528	34	--	--	--	--	--	--	--	--	2,651
1990-91	--	--	--	--	--	--	--	--	--	--	--	--	--
1991-92	--	--	--	65	--	--	--	--	--	--	--	--	65
MEXICO 3/													
1987-88	6	--	--	1	--	--	--	--	--	--	--	--	7
1988-89	--	--	--	--	--	--	--	--	--	--	--	4	4
1989-90	12	--	--	--	1	--	--	--	--	--	--	--	13
1990-91	--	--	--	--	--	--	--	--	--	--	--	--	--
1991-92	--	--	--	--	--	--	--	--	--	--	--	--	--
OTHER COUNTRIES													
1987-88	--	3	32	63	68	58	33	17	6	--	--	--	280
1988-89	--	4	126	24	24	18	7	2	3	4	--	--	212
1989-90	--	20	42	44	33	44	2	50	8	--	1	--	244
1990-91	--	40	106	90	115	3,574	17	2	1	--	--	--	3,945
1991-92	35	13	131	158	159	88	31	20	--	--	--	--	635
TOTAL													
1987-88	107	1,900	3,531	4,957	4,133	4,158	4,385	3,426	2,405	719	237	204	30,162
1988-89	126	2,143	3,973	5,089	4,115	4,380	4,549	2,986	1,993	699	197	133	30,383
1989-90	612	2,917	3,377	4,930	2,103	2,031	1,363	476	120	93	81	110	18,213
1990-91	1,253	2,275	3,305	3,780	3,492	6,846	3,538	2,399	1,406	515	297	65	29,171
1991-92	1,505	2,746	3,383	4,280	3,573	3,259	3,304	1,813	379	138	122	66	24,568

1/ August shipments 1990-91 season. 2/ Rail only, truck shipments not available. 3/ See page 35 for footnote.

SOURCE: See Page 45, Data Sources, Item 5.

TANGERINES, TANGELOS, TEMPLES, AND K-EARLY: Total fresh shipments in U.S. and to Canada by states of origin and imports to U.S., monthly for crop years 1987-88 through 1991-92

Crop year	Sep	Oct	Nov	Dec	Jan	Feb	Mar	Apr	May	Jun	Jul	Aug	Total
1,000 cartons													
TANGERINE													
Florida													
1987-88	--	180	383	729	531	559	504	208	9	--	--	--	3,103
1988-89	--	158	497	811	497	486	432	156	19	3	--	--	3,059
1989-90	3	195	548	710	220	98	15	--	--	--	--	--	1,789
1990-91	77	342	387	211	376	474	180	17	1	--	--	--	2,065
1991-92	22	302	624	700	746	635	427	15	1	2	--	--	3,474
Arizona 1/													
1987-88	--	--	--	--	2	34	20	--	--	--	--	--	56
1988-89	--	--	--	2	7	10	7	--	--	--	--	--	26
1989-90	--	--	--	4	1	1	--	--	--	--	--	--	6
1990-91	--	--	--	--	--	1	--	--	--	--	--	--	1
1991-92	--	--	--	--	--	2	3	--	--	--	--	--	5
Texas													
1987-88	--	--	--	--	--	--	--	--	--	--	--	--	--
1988-89	--	--	--	--	--	--	--	--	--	--	--	--	--
1989-90	--	--	--	--	--	--	--	--	--	--	--	--	--
1990-91	--	--	--	--	--	--	--	--	--	--	--	--	--
1991-92	--	--	--	--	--	--	--	--	--	--	--	--	--
Mexico 2/													
1987-88	--	74	266	274	89	9	--	--	--	--	--	--	712
1988-89	--	121	224	277	62	8	--	--	--	--	--	--	692
1989-90	--	93	208	226	85	2	--	--	--	--	--	--	614
1990-91	--	104	230	227	26	--	--	--	--	--	--	--	587
1991-92	--	100	197	119	22	3	--	--	--	--	--	--	441
TANGELOS: Florida													
1987-88	--	46	537	1,283	495	80	2	--	--	--	--	--	2,443
1988-89	--	15	594	1,270	425	32	1	1	--	--	--	--	2,338
1989-90	--	23	525	1,190	161	5	--	--	--	--	--	--	1,904
1990-91	4	136	555	900	346	35	1	--	--	--	--	--	1,977
1991-92	--	107	659	1,169	273	4	--	1	--	--	--	--	2,213
TEMPLES: Florida													
1987-88	--	--	--	55	959	982	290	9	--	--	--	--	2,295
1988-89	--	--	--	55	793	498	146	5	--	--	--	--	1,497
1989-90	--	--	--	2	46	155	10	--	--	--	--	--	213
1990-91	--	--	--	84	546	506	210	20	--	--	--	--	1,366
1991-92	--	--	--	28	730	595	123	4	--	--	--	--	1,480
K-EARLY: Florida													
1987-88	4	317	37	--	--	--	--	--	--	--	--	--	358
1988-89	--	370	139	93	--	--	--	--	--	--	--	--	602
1989-90 3/	4	208	50	--	--	--	--	--	--	--	--	14	276
1990-91	109	87	8	--	--	--	--	--	--	--	--	--	204
1991-92	41	160	8	--	--	--	--	--	--	--	--	--	209

1/ Rail only, truck shipments not available. 2/ See page 36 for footnote. 3/ August shipments 1990-91 season.

SOURCE: See Page 45, Data Sources, Item 5.

**ORANGES, TANGELOS, AND TEMPLES: Total fresh shipments exported by states of origin,
monthly for crop years 1987-88 through 1991-92**

Crop year	Sep	Oct	Nov	Dec	Jan	Feb	Mar	Apr	May	Jun	Jul	Aug	Total
1,000 cartons													
ORANGES													
Florida 1/													
1987-88	--	--	8	10	--	--	20	38	57	7	--	--	140
1988-89	--	--	9	5	--	2	41	70	28	--	--	--	155
1989-90	--	48	187	191	63	33	37	18	2	--	--	--	579
1990-91	28	102	293	196	164	257	425	478	183	22	3	--	2,151
1991-92	30	158	312	176	184	113	234	164	100	20	--	--	1,491
Arizona													
1987-88	--	--	23	13	3	6	406	422	81	6	--	--	960
1988-89	--	--	18	15	6	--	321	236	78	13	--	--	687
1989-90	--	--	2	2	2	--	--	2	17	20	--	--	45
1990-91	--	--	12	12	2	33	434	159	13	2	--	--	667
1991-92	--	10	13	36	23	20	302	441	234	66	8	--	1,153
California													
1987-88	969	587	595	738	1,550	896	1,022	1,808	2,838	1,999	1,344	1,215	15,561
1988-89	1,068	906	637	1,115	1,582	1,192	1,542	2,113	2,409	2,053	2,051	1,411	18,079
1989-90	1,019	732	1,147	1,325	1,406	1,365	2,462	1,850	3,322	3,116	1,248	1,130	20,122
1990-91	1,614	833	446	1,082	516	294	172	373	1,155	1,419	795	272	8,971
1991-92	292	147	510	695	1,193	1,980	2,235	2,003	3,971	2,162	1,129	1,113	17,430
Total 2/													
1987-88	969	587	626	761	1,553	902	1,448	2,268	2,976	2,012	1,344	1,215	16,661
1988-89	1,068	906	664	1,335	1,588	1,194	1,904	2,419	2,515	2,066	2,051	1,411	18,921
1989-90	1,019	780	1,336	1,518	1,471	1,398	2,499	1,870	3,341	3,136	1,248	1,130	20,746
1990-91	1,642	935	751	1,290	682	584	1,031	1,010	1,351	1,443	798	272	11,789
1991-92	322	315	835	907	1,400	2,113	2,771	2,608	4,305	2,248	1,137	1,113	20,074
TANGELOS: Florida 1/													
1987-88	--	--	--	--	1	--	--	--	--	--	--	--	1
1988-89	--	--	--	1	1	--	--	--	--	--	--	--	2
1989-90	--	--	27	21	9	--	--	--	--	--	--	--	57
1990-91	--	3	16	7	15	--	--	--	--	--	--	--	41
1991-92	--	3	20	17	23	--	--	--	--	--	--	--	63
TEMPLES: Florida 1/													
1987-88	--	--	--	--	2	38	12	--	--	--	--	--	52
1988-89	--	--	--	--	--	--	--	--	--	--	--	--	--
1989-90	--	--	--	--	--	11	2	--	--	--	--	--	13
1990-91	--	--	--	1	22	27	7	--	--	--	--	--	57
1991-92	--	--	--	--	27	29	17	--	--	--	--	--	73

1/ Beginning with 1989-90, includes shipments to Canada and Mexico. 2/ Includes small quantity from Texas.

SOURCE: See Page 45, Data Sources, Item 5.

**GRAPEFRUIT AND TANGERINES: Total fresh shipments exported by states of origin,
monthly for crop years 1987-88 through 1991-92**

Crop year	Sep	Oct	Nov	Dec	Jan	Feb	Mar	Apr	May	Jun	Jul	Aug	Total
1,000 cartons													
GRAPEFRUIT													
Florida 1/													
1987-88	--	1,180	1,560	1,478	2,924	3,479	4,052	3,943	1,582	7	--	--	20,205
1988-89	14	994	1,868	1,544	3,198	4,134	4,728	4,442	2,197	123	--	1	23,243
1989-90 2/	451	2,083	2,065	1,681	1,274	1,913	1,575	264	2	--	--	30	11,338
1990-91	1,379	2,184	2,271	1,876	3,928	3,645	3,573	2,907	697	66	45	--	22,571
1991-92	999	2,678	2,217	1,627	3,786	4,348	4,474	1,101	16	1	--	--	21,247
Arizona													
1987-88	--	--	--	--	--	--	--	--	3	5	--	--	8
1988-89	--	--	--	--	--	--	--	--	3	3	--	--	6
1989-90	--	--	--	--	--	--	--	--	--	--	--	--	--
1990-91	--	--	--	--	--	--	--	--	--	--	--	--	--
1991-92	--	--	--	--	--	--	--	5	--	3	--	--	8
California													
1987-88	3	--	--	--	--	--	--	--	3	--	8	--	14
1988-89	--	--	--	--	--	--	--	--	--	--	5	--	5
1989-90	2	--	--	--	--	--	--	--	--	--	--	--	2
1990-91	--	4	--	--	--	--	--	--	--	--	4	--	8
1991-92	--	--	--	--	--	--	--	--	--	3	5	--	8
Texas													
1987-88	--	9	84	6	26	53	7	--	--	--	--	--	185
1988-89	--	26	67	65	48	79	11	1	--	--	--	--	297
1989-90	--	5	47	214	34	--	--	--	--	--	--	--	300
1990-91	--	--	--	--	--	--	--	--	--	--	--	--	--
1991-92	--	--	--	--	--	--	--	--	--	--	--	--	--
Total													
1987-88	3	1,189	1,644	1,484	2,950	3,532	4,059	3,943	1,588	12	8	--	20,412
1988-89	14	1,020	1,935	1,609	3,246	4,213	4,738	4,443	2,200	126	5	1	23,551
1989-90	453	2,088	2,112	1,895	1,308	1,913	1,575	264	2	--	--	30	11,640
1990-91	1,379	2,188	2,271	1,876	3,928	3,645	3,573	2,907	697	66	49	--	22,579
1991-92	999	2,678	2,217	1,627	3,786	4,348	4,474	1,106	16	7	5	--	21,263
TANGERINES: Florida 1/													
1987-88	--	--	--	--	--	2	9	1	--	--	--	--	12
1988-89	--	--	2	--	3	7	13	6	1	--	--	--	32
1989-90	--	1	19	26	33	11	3	--	--	--	--	--	93
1990-91	2	37	19	8	44	50	20	1	--	--	--	--	181
1991-92	--	26	55	26	53	63	47	1	--	--	--	--	271

1/ Beginning with 1989-90, includes shipments to Canada and Mexico. 2/ August shipments 1990-91 season.

SOURCE: See Page 45, Data Sources, Item 5.

Footnote 3/ for page 32, 3/ for page 33, and 2/ for page 34. Final Mexican shipments to the U.S. are reported by FAS as a combined total for oranges and tangerines. The totals shown on pages 32 through 34 have been broken down proportionally into oranges and tangerines from Plant Quarantine data reported at the time of the crossing. Plant Quarantine releases give separate totals for these two types of citrus. Mexican shipments through the U.S. to Canada are not included.

CITRUS: U.S. fresh exports, by months, 1991-92

Crop year	Oct	Nov	Dec	Jan	Feb	Mar	Apr	May	Jun	Jul	Aug	Sep	Total
1,000 cartons													
ORANGES 1/													
Japan	874	1,042	677	1,593	2,644	2,799	1,462	385	419	565	435	71	12,966
Canada	384	378	311	443	315	442	284	236	190	136	137	114	3,370
France	495	213	218	552	471	425	99	5	--	--	5	10	2,493
Netherlands	185	137	154	224	240	299	105	10	--	--	--	6	1,360
Taiwan	--	--	1	2	217	281	73	111	57	99	23	--	864
United Kingdom	155	60	39	72	57	103	24	5	7	4	--	--	526
Germany	26	115	41	69	52	33	11	--	--	--	--	2	349
Belgium-Luxembourg	65	72	22	38	38	42	19	1	3	--	--	--	300
Rep. of Korea	9	23	13	12	49	32	61	24	1	10	9	2	245
Switzerland	18	14	30	23	26	16	2	--	--	1	--	--	130
Hong Kong	10	11	12	7	4	8	12	5	13	9	4	3	98
Others	20	33	24	28	32	32	13	6	1	2	2	1	194
Total	2,241	2,098	1,542	3,063	4,145	4,512	2,165	788	691	826	615	209	22,896
GRAPEFRUIT													
Japan	940	1,120	728	1,712	2,842	3,009	1,572	414	451	607	468	77	13,940
Canada	413	406	334	476	338	475	306	254	204	147	148	122	3,623
France	532	230	234	593	507	457	106	5	--	--	5	11	2,680
Netherlands	199	148	165	241	259	322	113	10	--	--	--	6	1,463
United Kingdom	--	--	1	3	233	302	78	119	61	107	25	--	929
Taiwan	167	64	41	78	61	110	26	6	8	4	--	--	565
Belgium-Luxembourg	28	123	45	74	56	35	12	--	--	--	--	2	375
Rep. of Korea	70	78	24	41	41	45	20	1	3	--	--	--	323
Germany	10	24	14	13	52	34	66	26	1	11	10	2	263
Switzerland	19	15	32	25	28	18	2	--	--	1	--	--	140
Hong Kong	10	12	13	7	5	8	13	6	13	10	4	4	105
Others	21	36	26	30	35	35	14	6	1	2	2	1	209
Total	2,409	2,256	1,657	3,293	4,457	4,850	2,328	847	742	889	662	225	24,614
TANGERINES													
Canada	21	106	65	91	87	88	26	2	--	2	2	--	490
United Kingdom	--	--	--	2	21	18	5	7	1	--	--	--	54
Netherlands	--	--	--	1	25	6	--	--	--	--	--	--	32
France	--	--	--	5	7	--	--	1	--	--	--	--	13
Taiwan	--	--	--	--	--	--	--	5	1	--	--	--	6
Belgium-Luxembourg	--	--	--	1	5	--	--	--	--	--	--	--	6
Others	--	1	--	--	3	3	--	2	2	--	--	--	11
Total	21	107	65	100	148	115	31	17	4	2	2	--	612

1/ Includes Temples.

SOURCE: See Page 45, Data Sources, Item 6.

FLORIDA CITRUS: Certified citrus exports by weeks, crop year 1991-92

Week ended	Oranges		Seedless Grapefruit		Temples	Tangelos 1/	Tan- gerines	Total exports	
	Navel	Other	White	Colored					
1,000 cartons									
Sep	1	--	--	--	6	--	--	6	
	8	1	--	16	26	--	--	43	
	15	1	2	28	69	--	--	100	
	22	1	7	100	269	--	--	377	
	29	9	15	87	390	--	--	501	
Oct	6	8	17	167	384	--	1	578	
	13	6	24	164	151	--	--	348	
	20	10	37	207	423	--	1	682	
	27	17	45	400	485	--	3	963	
Nov	3	15	35	201	445	--	3	719	
	10	14	41	334	319	--	3	724	
	17	36	50	304	291	--	3	702	
	24	79	29	219	348	--	5	691	
Dec	1	76	27	70	149	--	10	341	
	8	49	19	166	157	--	7	407	
	15	26	16	278	190	--	7	524	
	22	3	42	131	405	--	2	587	
	29	2	10	25	182	--	1	222	
Jan	5	--	35	118	236	4	6	406	
	12	2	57	423	385	8	8	896	
	19	3	59	251	582	9	8	926	
	26	4	23	488	484	8	2	1,023	
Feb	2	2	28	560	508	9	--	1,120	
	9	--	27	570	471	9	--	1,092	
	16	--	30	653	446	12	--	1,161	
	23	--	42	720	496	4	--	1,278	
Mar	1	--	38	649	410	4	--	1,117	
	8	--	55	642	481	7	--	1,203	
	15	--	55	623	515	4	--	1,213	
	22	--	71	688	444	3	--	1,214	
	29	--	59	526	345	--	--	934	
Apr	5	--	38	286	269	--	--	594	
	12	--	56	281	152	--	--	489	
	19	--	30	110	101	--	--	241	
	26	--	42	22	64	--	--	128	
May	3	--	25	6	20	--	--	51	
	10	--	30	--	6	--	--	36	
	17	--	29	--	1	--	--	30	
	24	--	24	--	1	--	--	25	
	31	--	26	--	1	--	--	27	
Jun total		--	15	--	--	--	--	15	
Jul total		--	1	--	--	--	--	1	
Total		364	1,311	10,513	11,107	81	70	289	23,735

1/ Includes K-Early citrus fruit. SOURCE: See Page 45, Data Sources, Item 7.

FLORIDA CITRUS: Certified citrus exports, crop years 1983-84 through 1991-92 1/

Crop year	Oranges			Grapefruit			Specialty fruit			Grand Total
	Commer- cial	Govern- ment	Total	Commer- cial	Govern- ment	Total	Commer- cial	Govern- ment	Total	
1,000 cartons										
1983-84	26	16	42	9,938	14	9,952	44	--	44	10,038
1984-85	8	2	10	5,658	6	5,664	--	--	--	5,674
1985-86	202	--	202	11,078	--	11,078	4	--	4	11,284
1986-87	382	--	382	15,479	3	15,482	--	--	--	15,864
1987-88	139	--	139	20,663	13	20,676	76	--	76	20,891
1988-89	154	--	154	23,566	1	23,567	31	--	31	23,752
1989-90	686	--	686	11,419	--	11,419	197	--	197	12,302
1990-91	2,335	--	2,335	22,969	--	22,969	335	2	337	25,641
1991-92	1,674	1	1,675	21,619	1	21,620	440	--	440	23,735

1/ Shipments certified in Florida for export to foreign countries other than Canada and Mexico through 1988-89. Canada and Mexico included in export beginning 1989-90. SOURCE: See Page 45, Data Sources, Item 7.

FLORIDA CITRUS: Fresh exports, 1990-91 and 1991-92 crop years

Country	Grapefruit		Oranges 1/		Tangerines		Total	
	1990-91	1991-92	1990-91	1991-92	1990-91	1991-92	1990-91	1991-92
1,000 cartons								
Japan	11,184	11,011	328	37	--	--	11,512	11,048
Canada	3,616	2,983	1,797	1,426	184	260	5,597	4,669
France	2,783	3,046	--	5	--	--	2,783	3,051
Holland	1,561	1,479	51	24	--	--	1,612	1,503
Belgium	1,811	953	1	4	--	--	1,812	957
Taiwan	488	661	95	182	--	--	583	843
England	741	571	8	16	--	--	749	587
Germany 2/	334	401	--	--	--	--	334	401
South Korea	201	238	12	9	--	--	213	247
Hong Kong	41	40	154	90	--	--	195	130
Italy	99	65	--	--	--	--	99	65
Sweden	60	57	--	--	--	--	60	57
Puerto Rico	8	5	18	9	16	29	42	43
Singapore	16	34	4	4	--	--	20	38
United Kingdom	--	34	2	--	--	--	2	34
Unknown	--	10	--	7	--	--	--	17
Denmark	1	10	--	1	--	--	1	11
Finland	--	6	--	1	--	--	--	7
Russia	--	--	--	5	--	--	--	5
Iceland	--	1	--	3	--	--	--	4
Switzerland	14	3	--	--	--	--	14	3
Bermuda	--	3	--	--	--	--	--	3
Hawaii	--	3	--	--	--	--	--	3
Northern Ireland	2	2	--	--	--	--	2	2
Norway	1	2	--	--	--	--	1	2
Czechoslovakia	--	2	--	--	--	--	--	2
Indonesia	--	--	--	2	--	--	--	2
Cuba	--	--	--	1	--	--	--	1
Argentina	8	--	--	--	--	--	8	--
Saudi Arabia	--	--	--	--	2	--	2	--
Total	22,969	21,620	2,470	1,826	202	289	25,641	23,735

1/ Includes Temples, tangelos, and K-Early Citrus Fruit. 2/ 1990-91 figures are for West Germany.

SOURCE: See Page 45, Data Sources, Item 7.

FLORIDA CITRUS: Boxes of fruit processed by weeks, crop years 1990-91 and 1991-92

Week ended	Oranges		Grapefruit		Temples	
	1990-91	1991-92	1990-91	1991-92	1990-91	1991-92
1,000 boxes						
Aug total	--	--	--	9	--	--
Sep						
1	8	--	4	6	--	--
8	10	--	34	3	--	--
15	33	9	65	19	--	--
22	34	49	86	47	--	--
29	50	72	102	125	--	--
Oct						
6	165	124	119	129	--	--
13	358	113	122	118	--	--
20	892	211	180	182	--	--
27	1,809	267	207	275	--	--
Nov						
3	3,149	819	267	222	--	--
10	3,599	1,543	210	366	--	--
17	5,497	2,858	303	328	--	--
24	4,055	4,302	258	374	--	--
Dec						
1	6,651	2,846	418	202	--	--
8	6,775	6,253	446	384	3	1
15	7,178	7,124	551	523	10	1
22	6,121	8,044	604	567	14	4
29	4,127	4,221	233	185	9	2
Jan						
5	5,172	7,594	399	372	27	19
12	6,152	7,218	626	731	46	43
19	4,855	6,556	679	738	35	61
26	5,158	5,822	1,015	955	66	95
Feb						
2	4,446	4,495	1,311	1,338	95	169
9	3,308	2,798	1,591	1,700	131	223
16	2,303	1,931	1,469	1,937	235	203
23	2,070	1,020	1,660	1,562	375	303
Mar						
1	2,135	1,353	1,025	1,272	189	195
8	3,842	1,665	1,155	1,168	193	84
15	4,534	2,091	1,079	1,002	120	42
22	5,211	2,916	768	937	83	28
29	5,121	3,798	791	734	48	6
Apr						
5	5,179	4,272	621	457	15	4
12	5,355	5,288	540	280	5	4
19	5,027	5,228	477	140	5	1
26	4,741	5,423	488	64	--	4
May						
3	4,109	5,079	416	51	--	--
10	3,537	4,496	297	7	1	1
17	2,609	3,722	181	6	--	--
24	1,695	2,892	71	1	--	--
31	1,223	1,794	75	5	--	--
Jun						
7	547	724	66	2	--	--
14	73	670	33	1	--	--
21	49	376	26	1	--	--
28	51	40	28	3	--	--
Jul						
5	21	21	9	--	--	--
12	9	16	2	--	--	--
31	23	43	11	1	1	1
Aug total	83	43	59	27	--	--
Total	139,149	128,239	21,177	19,556	1,706	1,494

1/ Includes K-Early Citrus Fruit. SOURCE: See Page 45, Data Sources, Item 7.

(Continued)

FLORIDA CITRUS: Boxes of fruit processed by weeks, crop years 1990-91 and 1991-92 (Continued)

Week ended	Tangelos		Tangerines 1/		Honey Tangerines		K-Early		
	1990-91	1991-92	1990-91	1991-92	1990-91	1991-92	1990-91	1991-92	
1,000 boxes									
Sep	1	--	--	--	--	--	--	1	--
	8	--	--	--	--	--	--	4	--
	15	--	--	5	--	--	--	5	--
	22	--	--	8	--	--	--	6	--
	29	4	--	7	1	--	--	9	6
Oct	6	7	1	6	4	--	--	7	2
	13	17	3	15	12	--	--	8	8
	20	28	8	21	14	--	--	7	6
	27	26	25	26	16	--	--	1	2
Nov	3	52	33	21	19	--	--	1	5
	10	60	41	35	16	--	--	--	8
	17	90	48	45	18	7	--	--	9
	24	54	79	27	19	4	--	--	4
Dec	1	124	47	36	10	19	--	--	--
	8	147	124	23	30	24	--	--	1
	15	161	172	17	39	27	--	--	--
	22	137	171	11	47	14	1	--	1
	29	57	69	3	5	10	--	--	--
Jan	5	90	148	2	21	24	8	--	--
	12	110	131	4	23	24	19	--	--
	19	83	96	4	14	17	29	--	--
	26	76	53	2	15	29	25	--	--
Feb	2	52	25	2	4	29	25	--	--
	9	41	6	--	1	36	29	--	--
	16	22	11	--	2	35	37	--	--
	23	14	1	1	--	35	30	--	--
Mar	1	4	--	--	--	20	29	--	--
	8	4	1	--	--	23	27	--	--
	15	2	--	--	--	14	23	--	--
	22	--	--	--	--	3	11	--	--
	29	1	--	--	--	3	6	--	--
Apr	5	--	--	--	--	2	3	--	--
	12	1	--	--	--	2	1	--	--
	19	--	--	--	--	--	--	--	--
	26	--	--	--	--	--	1	--	--
May	3	--	--	--	--	--	--	--	--
	10	--	--	--	--	1	--	--	--
	17	--	--	--	--	--	--	--	--
	24	--	--	--	--	--	--	--	--
	31	--	--	--	--	--	--	--	--
Jun	7	--	--	--	--	--	--	--	--
	14	--	--	--	--	--	--	--	--
	21	--	--	--	--	--	--	--	--
	28	--	--	--	--	--	--	--	--
Jul total		--	--	--	--	--	--	--	--
Aug total		--	--	--	--	--	--	--	--
Total		1,464	1,293	321	330	402	304	49	52

1/ Robinson, Sunburst, and Dancy varieties. SOURCE: See Page 45, Data Sources, Item 7.

**FLORIDA CITRUS: Distribution of recorded utilization, by types,
by months, crop years 1987-88 through 1991-92**

Crop year	Sep	Oct	Nov	Dec	Jan	Feb	Mar	Apr	May	Jun	Jul	Aug	Total
Percent													
FRESH ORANGE SHIPMENTS													
1987-88	--	--	18	26	11	7	12	11	11	4	--	--	100
1988-89	--	--	22	28	9	5	13	11	9	3	--	--	100
1989-90	--	--	34	38	9	6	7	4	2	--	--	--	100
1990-91	--	9	13	19	7	13	14	14	11	--	--	--	100
1991-92	--	18	21	19	8	8	8	10	6	2	--	--	100
PROCESSED ORANGE USAGE													
1987-88	--	--	--	14	21	18	6	13	18	10	--	--	100
1988-89	--	--	2	16	23	15	6	14	17	7	--	--	100
1989-90	--	--	3	19	35	15	10	10	8	--	--	--	100
1990-91	--	4	14	19	17	8	14	15	9	--	--	--	100
1991-92	--	1	9	22	22	6	9	17	12	2	--	--	100
FRESH GRAPEFRUIT SHIPMENTS													
1987-88	--	7	11	12	14	14	17	16	9	--	--	--	100
1988-89	--	4	12	11	13	16	17	16	11	--	--	--	100
1989-90	3	19	18	19	12	15	12	2	--	--	--	--	100
1990-91	6	9	11	12	16	15	15	11	5	--	--	--	100
1991-92	5	13	13	12	16	18	17	6	--	--	--	--	100
PROCESSED GRAPEFRUIT USAGE													
1987-88	--	--	4	7	11	21	38	14	5	--	--	--	100
1988-89	--	1	5	8	10	21	34	14	7	--	--	--	100
1989-90	--	4	6	9	24	37	17	3	--	--	--	--	100
1990-91	1	4	6	9	17	28	19	11	5	--	--	--	100
1991-92	1	5	7	9	19	34	21	4	--	--	--	--	100
FRESH TANGERINE SHIPMENTS													
1987-88	--	7	12	23	18	19	17	4	--	--	--	--	100
1988-89	--	6	15	24	17	16	15	7	--	--	--	--	100
1989-90	--	11	25	39	13	7	1	--	--	--	--	--	100
1990-91	4	16	18	10	20	22	10	--	--	--	--	--	100
1991-92	--	10	18	19	22	19	12	--	--	--	--	--	100
FRESH TANGELO SHIPMENTS													
1987-88	--	--	25	51	21	3	--	--	--	--	--	--	100
1988-89	--	--	28	53	18	1	--	--	--	--	--	--	100
1989-90	--	--	31	60	9	--	--	--	--	--	--	--	100
1990-91	--	8	28	45	17	2	--	--	--	--	--	--	100
1991-92	--	6	32	51	11	--	--	--	--	--	--	--	100
FRESH TEMPLE SHIPMENTS													
1987-88	--	--	--	--	44	43	13	--	--	--	--	--	100
1988-89	--	--	--	--	57	33	10	--	--	--	--	--	100
1989-90	--	--	--	--	26	70	4	--	--	--	--	--	100
1990-91	--	--	--	6	41	38	15	--	--	--	--	--	100
1991-92	--	--	--	--	53	38	9	--	--	--	--	--	100

CITRUS: Per capita consumption, United States, 1981-82 through 1990-91

Crop Year	Fresh fruit							Juices		
	Oranges	Grapefruit	Tangerines	Tangelos	Lemons	Limes	Total	Orange	Other	Total
	Pounds							Gallons, single strength		
1981-82	11.7	7.2	1.4	0.7	2.0	0.4	23.4	4.5	0.9	5.4
1982-83	15.1	7.8	1.5	0.7	2.3	0.6	28.0	5.6	0.8	6.4
1983-84	11.9	6.0	1.4	0.6	2.1	0.6	22.6	4.5	0.4	4.9
1984-85	11.6	5.5	1.0	0.5	2.3	0.7	21.6	5.0	0.8	5.8
1985-86	13.4	6.1	1.1	0.5	2.5	0.7	24.3	5.0	0.6	5.6
1986-87	12.8	6.3	1.3	0.5	2.5	0.6	24.0	5.2	0.9	6.1
1987-88	13.9	6.6	1.3	0.5	2.5	0.6	25.4	5.0	0.5	5.5
1988-89	12.5	7.5	1.3	0.5	2.5	0.8	25.1	5.0	0.8	5.8
1989-90	12.4	5.0	1.0	0.4	2.6	0.7	22.1	4.2	0.5	4.7
1990-91 1/	8.3	6.8	1.0	0.4	2.6	0.8	19.9	4.7	0.5	5.2

1/ Preliminary.

SOURCE: See Page 45, Data Sources, Item 10.

FLORIDA CITRUS: Frozen concentrated orange juice yields at 42.0 degrees Brix for crop years 1972-73 through 1991-92

Crop year	All orange	Early-midseason	Late
Gallons per box			
1972-73	1.44583	1.39832	1.50123
1973-74	1.40836	1.37211	1.45700
1974-75	1.42743	1.36005	1.51922
1975-76	1.39917	1.37211	1.43148
1976-77 1/	1.16105	1.17157	1.14028
1977-78	1.33668	1.30720	1.37321
1978-79	1.45540	1.42121	1.49803
1979-80	1.44931	1.41357	1.49639
1980-81 1/	1.25736	1.25888	1.25479
1981-82 1/	1.27730	1.31576	1.21496
1982-83	1.48305	1.41625	1.55933
1983-84 1/	1.28931	1.23692	1.39011
1984-85 1/	1.37578	1.39083	1.35988
1985-86	1.37834	1.35822	1.40629
1986-87	1.50827	1.44643	1.59621
1987-88	1.55342	1.48982	1.64573
1988-89	1.53625	1.47532	1.62816
1989-90 1/	1.22604	1.23446	1.20566
1990-91	1.45383	1.39285	1.55915
1991-92	1.54818	1.46846	1.69608

1/ Freeze year.

SOURCE: See page 45, Data Sources, Item 3.

**CITRUS FRUIT: Production, by selected countries, principal types,
crop years 1987-88 through 1991-92**

Country	Crop years				
	1987-88	1988-89	1989-90	1990-91	1991-92 1/
	1,000 metric tons 2/				
ORANGES 3/					
Brazil	10,400	14,150	12,036	12,360	13,180
United States 4/	7,903	8,272	7,083	7,218	8,135
Spain	2,442	2,216	2,400	2,590	2,490
Mexico	1,942	2,268	1,900	2,300	2,100
Italy	1,343	2,170	2,067	1,820	2,000
Egypt	1,387	1,199	1,397	1,574	1,600
Turkey	700	740	740	735	850
Morocco	891	994	775	1,103	790
Greece	462	770	932	819	770
Argentina	650	620	750	650	750
South Africa 5/	682	629	697	678	665
Cuba	508	520	604	600	600
Australia	394	544	458	483	509
Israel	627	546	877	567	469
Cyprus	138	170	223	174	173
Uruguay	NA	70	82	122	130
Chile	120	115	115	118	117
Gaza	83	98	171	114	105
Total	30,672	36,091	33,307	34,025	35,433
GRAPEFRUIT					
United States 4/	2,541	2,580	1,795	2,046	1,985
Cuba	284	385	264	332	332
Israel	317	353	373	384	319
Argentina	176	155	190	160	170
South Africa 5/	135	135	124	132	135
Mexico	NA	75	95	100	110
Cyprus	NA	115	118	118	100
Total	3,453	3,798	2,959	3,272	3,151
LEMONS					
Italy	592	708	667	620	680
United States	712	689	640	655	676
Argentina	517	350	400	570	570
Spain	760	733	660	630	510
Turkey	240	300	335	360	400
Greece	89	170	189	169	120
Total	2,910	2,950	2,891	3,004	2,956
TANGERINES					
Japan 6/	2,941	2,387	2,375	1,993	1,864
Spain	1,307	1,260	1,084	1,575	1,400
Brazil 7/	453	570	592	570	605
Italy	333	411	476	445	500
Turkey	280	310	336	345	320
United States 4/ 8/	369	372	269	257	308
Morocco 9/	303	420	223	311	294
Egypt	134	151	170	257	265
Argentina	286	290	250	200	230
Mexico	151	157	169	170	165
Total	6,557	6,328	5,944	6,123	5,951

1/ Forecast. 2/ One metric ton is equivalent to 2,204.6 pounds. 3/ Includes tangerines and Temples in some countries. 4/ U.S. export data adjusted based on import data from Statistics Canada. 5/ Includes some fruit produced in Swaziland, Botswana, Mozambique, and Zimbabwe which is marketed through the South African Citrus board. 6/ Mainly satsumas but also including madarin hybrids. 7/ State of Sao Paulo only, which apparently accounts for over one-half of Brazil's production. About 120,000 tons of tangerines which are processed are included in the orange table. 8/Includes tangelos, which account for about half of the total production. 9/ Clementines only.

SOURCE: See Page 45, Data Sources, Item 6.

DATA SOURCES

All data in this summary are official statistics of United States Department of Agriculture issued by the National Agricultural Statistics Service, except when another source is shown.

1. United States Department of Commerce
Federal-State Agricultural Weather Service
1408 24th Street, S.E.
Ruskin, Florida 33570
2. Hume, H. Harold, The Cultivation of Citrus Fruits
(New York: The Macmillan Co., 1926) - Data for
1987-88 through 1908-09
3. Florida Citrus Processors Association
P.O. Box 780
Winter Haven, Florida 33880
4. Arizona Agricultural Statistics Service
201 East Indianola, Suite 250
Phoenix, Arizona 85012

California Agricultural Statistics Service
P.O. Box 1258
Sacramento, California 95812

Texas Agricultural Statistics Service
P.O. Box 70
Austin, Texas 78767
5. United States Department of Agriculture
Agricultural Marketing Service
Washington, D.C. 20250
6. United States Department of Agriculture
Foreign Agricultural Service
Washington, D.C. 20250
7. Florida Department of Agriculture and Consumer Services
Division of Fruit and Vegetable
P.O. Box 1072
Winter Haven, Florida 33880
8. Citrus Administrative Committee
P.O. Box R
Lakeland, Florida 33802
9. Florida Citrus Mutual
P.O. Box 89
Lakeland, Florida 33802
10. United States Department of Agriculture
Economic Research Service
1301 New York Avenue, N.W.
Washington, D. C. 20005-4788
11. National Weather Service
SE Ag Weather Service Center
Fisheries Annex Bldg.
P.O. Box 2246
Auburn, AL 36831-2246

U.S. Citrus Production Areas

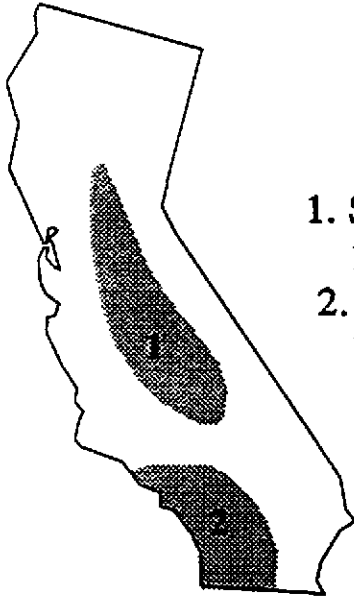
Arizona

1. Western 22,000 acres
2. Central 13,200 acres



California

1. San Joaquin Valley 162,900 acres
2. Southern California 109,400 acres



Florida

1. Indian River 195,000 acres
2. Northern 42,900 acres
3. Central 168,000 acres
4. Western 161,000 acres
5. Southern 224,400 acres



Texas

1. Lower Rio Grande Valley 34,500 acres

